

Chamaeleon III

Fire Stairs/Car Park Luminaire CHAM-C



Installation Instructions

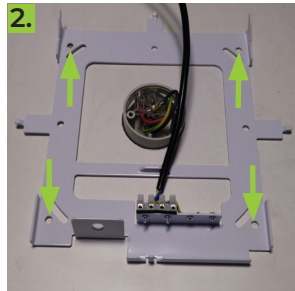


NOTE: All electrical work must be carried out by a licensed electrician as per the latest AS 3000 wiring regulations.
WARNING: All maintenance is to be performed by the supplier, a service agent or qualified person.
The light must be operated within its specified operating parameters and in accordance with our warranty requirements.
These documents are available on our website .

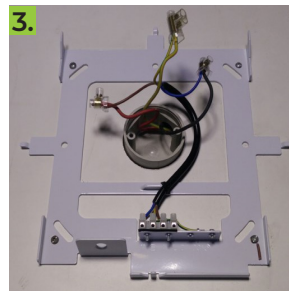
INSTALLATION



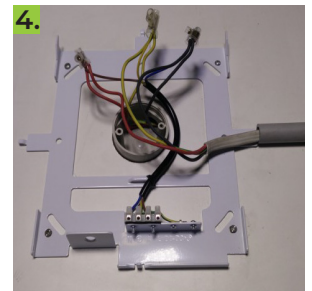
1. Place the light on a soft surface to avoid scratching the diffuser. Using the key taped to the body of the light, remove the base by turning the key and pulling on the barrel lock.



2. Mount Smart-Connect base by fixing it to the ceiling at all four corners. Minimum size fixing: 6.5mm. If fixing to plasterboard use 4 hollow wall anchors.



3. Connect the Smart-Connect base wiring to the light circuit. Emergency lights must be connected to permanent active and must not be switched, to prevent premature battery failure.



4. The conduit locator tabs help to hold the conduit in the correct position. Standard conduit size is 20mm. For 25mm conduit a reducer is required.



5. Place Smart-Connect Base plate hinge tabs into slots located at opposite end to barrel lock. Align the electrical connector terminal pins on the light fitting to the terminal block sockets on the base.



6. Once aligned, press the light upwards to connect. Do not force the light into the base terminal without aligning the pins and clicking the hinges as the pins may snap. Push barrel lock in to secure.



7. A vandal proof skirt is available as an optional extra (part no. Cham-VPS). To install the vandal proof skirt, slide it over the light before connecting the light to the Smart-Connect Base as shown in the previous step.



8. For emergency lights it is important to stick the emergency symbol on the outside of the vandal proof skirt.

Once installed, the Chamaeleon III can be easily detached from the Smart-Connect base without disconnecting the power, making it easy for maintenance or light replacement

NOTE : The terminal block remains live and should not be left unattended without a Chamaelon III light attached.

Chamaeleon III

Fire Stairs/Car Park Luminaire CHAM-C



Installation Instructions

MICROWAVE SENSOR SETTINGS

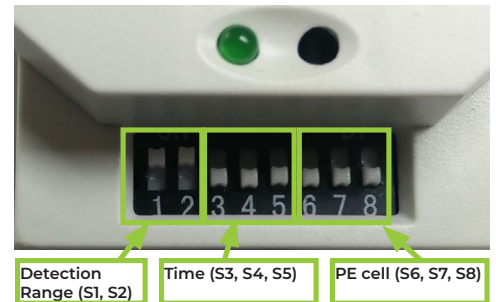
If you wish to adjust microwave sensor settings, remove the diffuser with an Allen key and adjust settings to suit.

Microwave sensor Detection Range

The detection range/sensitivity of the sensor may be adjusted if required.

Default setting is 10m.

Sensor Range		
Dipswitch	1	2
2m	OFF	OFF
5m	OFF	ON
8m	ON	OFF
10m	ON	ON



Hold Time

Time the fitting stays at full light, before dimming down to the standby light level.

Hold Time								
Dipswitch	10s	20s	30s	40s	50s	1min	2min	5min
S3	OFF	OFF	OFF	OFF	ON	ON	ON	ON
S4	OFF	OFF	ON	ON	OFF	OFF	ON	ON
S5	OFF	ON	OFF	ON	OFF	ON	OFF	ON

Daylight Sensor

When the daylight sensor is enabled, the fitting will remain at standby light level when there is sufficient natural light in the area. The fitting will not react to movement during this time. When light levels drop, the motion sensor becomes active again and the fitting will switch to full brightness when motion is detected. A value of 50lux is suitable for most applications. **Please note that the fitting will not turn off completely during the day.**

If this function is not desired, leave dipswitches 6, 7&8 in the OFF position. Factory setting: **24h/OFF**

Daylight Sensor								
Dipswitch	24hr/OFF	10 lux	20 lux	50 lux	100 lux	200 lux	300 lux	400 lux
S6	OFF	OFF	OFF	OFF	ON	ON	ON	ON
S7	OFF	OFF	ON	ON	OFF	OFF	ON	ON
S8	OFF	ON	OFF	ON	OFF	ON	OFF	ON

Chamaeleon III

Fire Stairs/Car Park Luminaire CHAM-C



Installation Instructions

BATTERY STATUS ON INSTALLATION

For emergency versions, the status LED indicates battery status and is visible through the diffuser.

On light start-up the indicator is light blue and then, after 60 seconds, red or green shows the condition of the battery.



- Light blue—warming up light
- Solid Green or Red –OK
- Flashing Green & Red– battery not connected/faulty
- No light– fitting is faulty

BATTERY SELF TEST FUNCTION





The Chamaeleon III emergency light is programmed to automatically conduct a monthly self-test. The test does not disrupt the light's normal operation.

There are 2 types of self-test:

- Monthly 90min test
- Commissioning test of 120min after the light has been installed or whenever the battery is replaced. Battery is charged for 24hrs before the test commences.

After each test the results are displayed via a single multi colour LED indicator located under the diffuser, see table.

The test result will be displayed until another self-test has taken place or until the battery has been replaced. During normal operation the expected indicator colours would be a sequence of 5 blue flashes (to indicate self-test has passed) and either 1 red flash (battery charging) or 1 green flash (battery charged).

Indicator Colour		Light Operation
Solid Blue / Violet		Testing in progress (90 mins)
Flashing Blue / Violet		Recently tested and complies* Normal state awaiting next discharge test
Flashing Yellow		Tested and failed due to faulty LED's
Flashing Red		Tested and failed due to battery

* Following a successful discharge test, the blue flashing light indicator will be mixed with a solid green or red light to show battery charge status (red - charging, green—charged)

BATTERY REPLACEMENT

To replace the battery, open the battery compartment on the side of the fitting. Disconnect the red in-line connector and connect the new battery. Close the battery compartment.

If the light is fitted with a vandal proof skirt, use the Chamaeleon key to unlock the fitting from the smart-connect base first.

Part no. for the replacement battery is **SPC-Batt-HCi**

