



enLighten

Innovation in Lighting Solutions



DISTRIBUTION CENTRE LIGHTING

**LEARN HOW TO ENHANCE SAFETY, PRODUCTIVITY
AND ENERGY EFFICIENCY THROUGH LIGHTING**

Call us on 1800 365 444 | enlighten.com.au

**THE DOCK ENVIRONMENT
IS ONE OF THE MOST
CRITICAL AREAS IN ANY
SUPPLY CHAIN.**

**HOWEVER, THEY'RE
ALSO ONE OF THE MOST
DANGEROUS.**

Loading docks, industrial estates and logistic centres require a lot of light. Issues such as inadequate light levels or alternatively too much glare can cause workers and truck drivers not to see or respond to potential dangers.



FAST FACTS



8,110

**INJURIES IN
WAREHOUSES RECORDED
OVER 5 YEARS***



7,055

**FORK TRUCK INJURIES
RECORDED IN
WAREHOUSES***



161

**FATALITIES INVOLVING
TRUCKS, SEMI-TRAILERS
AND LORRIES***

Safe Work Australia 2013-14 to 2017-18:

*Injuries recorded in the warehousing and services sector | *Fork truck Injuries recorded from workers' compensation claims | *Number of worker fatalities in all industries

Effective lighting can make the difference between life and death at a warehouse.

High volume of trucks, forklifts and pedestrian movements around a dock at one time is a recipe for serious accidents.

We are proud to have our lighting designers and a range of luminaires to support you to improve the safety and performance of your staff in these areas.

Steve Cahill, CEO enLighten



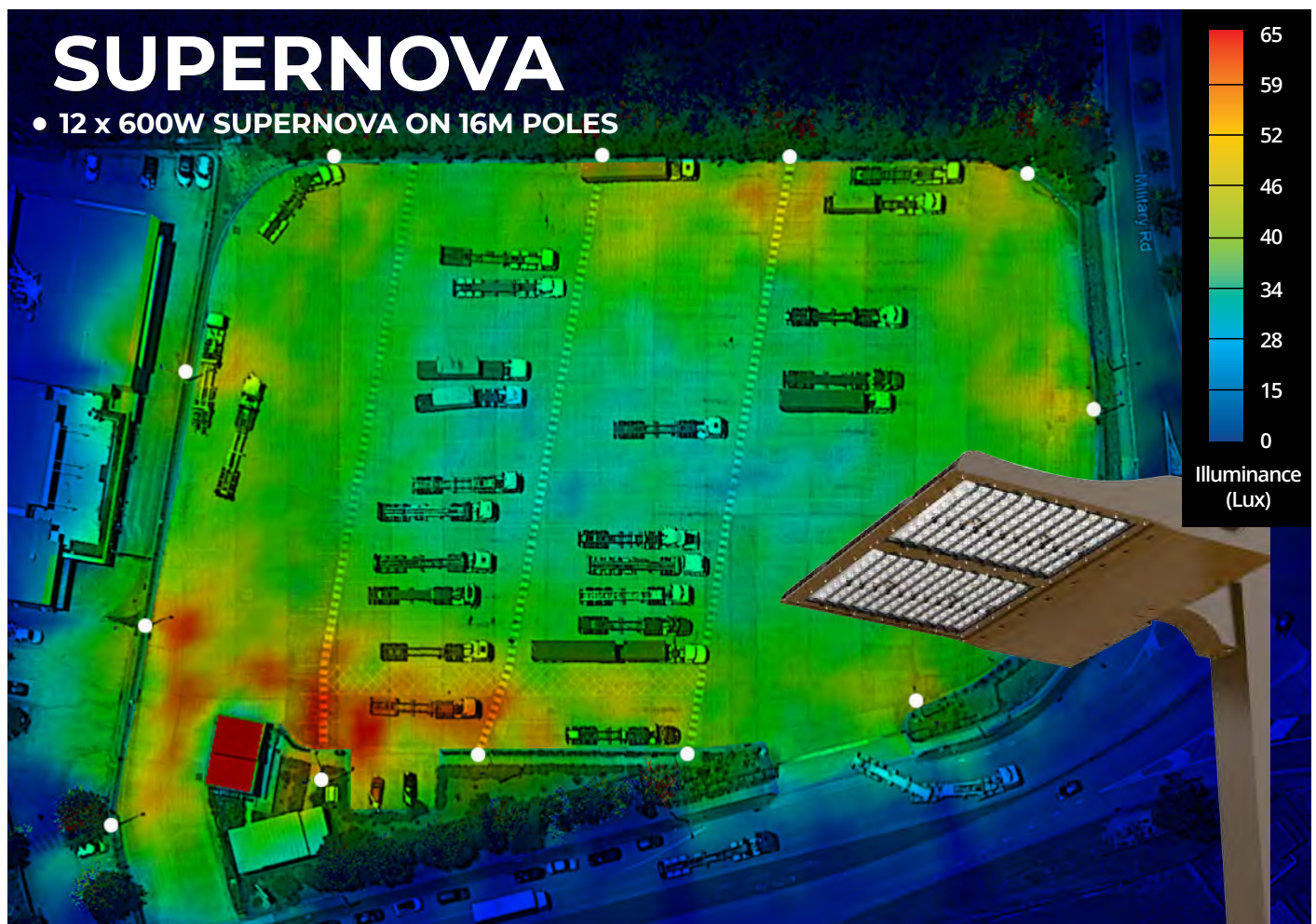
IMPROVE SAFETY & REDUCE INJURIES WITH GOOD LIGHTING DESIGN

Exterior lighting in a distribution centre is often neglected. Creating and maintaining a safe work environment is the keystone of any successful facility. If you want to improve the safety of your facility, then good lighting design is essential.

Lighting design ensures areas can be uniformly lit to minimise hazards and it helps to improve visibility around entry points, interior roadways and truck movement areas.

Using a luminaire with a range of optics means light can be targeted exactly where it's required, reducing unwanted spillage and glare into neighbouring properties or bushland.

Uniform Lighting Design for a 10,000 sqm Truck Yard



15 Bumbora Point, Matraville NSW

Recommended Lighting Requirements

	Australian Standards Illuminance Requirements		Special lighting design consideration
	Average Lux	Minimum Lux	
External work intensive areas like: Assembly, fabrication, manufacture or maintenance	80	10	High Uniformity, Lowest Glare
Forklift or Manually Operated External Loading/ Unloading Areas	40	5	High Uniformity, Lowest Glare
Truck Turning / Hardstand Areas	40	5	High Uniformity, Lowest Glare
General storage areas for large objects with both pedestrian & vehicular access like Driveways, Fire Access Roads, Large Open storage areas. No access to general public.	20	2.5	Medium Uniformity, Lower Glare
General storage areas for large objects with pedestrian access only and light internal traffic by site inducted personnel only	10	1	Medium Uniformity, Lower Glare
General storage areas for large objects that are rarely visited and have no pedestrian access.	5	1	Low Uniformity, Low Glare

WHAT IS LIGHT POLLUTION?

Light pollution is an unwanted consequence of outdoor lighting and includes sky glow, light trespass, glare and clutter. Light pollution can have serious environmental consequences for humans, wildlife, and our climate.

GLARE

Excessive brightness that causes visual discomfort

SKYGLOW

Brightening of the night sky over inhabited areas

LIGHT TRESPASS

Light falling where it is not intended or needed

CLUTTER

Bright, confusing and excessive groupings of light sources

WHAT CAN WE DO?

Light pollution can be reduced by using well-designed light fixtures with modern optics and spill guards, as well engaging a lighting designer to ensure light only goes where it is needed.

ELIMINATE OBTRUSIVE LIGHT

NEW

SUPERNOVA*

HIGH POWERED MULTIPLE OPTIC FLOODLIGHT

The SuperNova will improve area safety and night-time visibility by delivering quality uniform light. Minimise obtrusive light into unwanted neighbouring areas or nearby premises using the full cut off optics, glare control and an optional backward spill guard.

Achieve a perfect balance between superior optical performance and energy consumption. It is easy to install and comes with a U-bracket which is suitable for wall mounting or use the optional pole mounting adaptor.

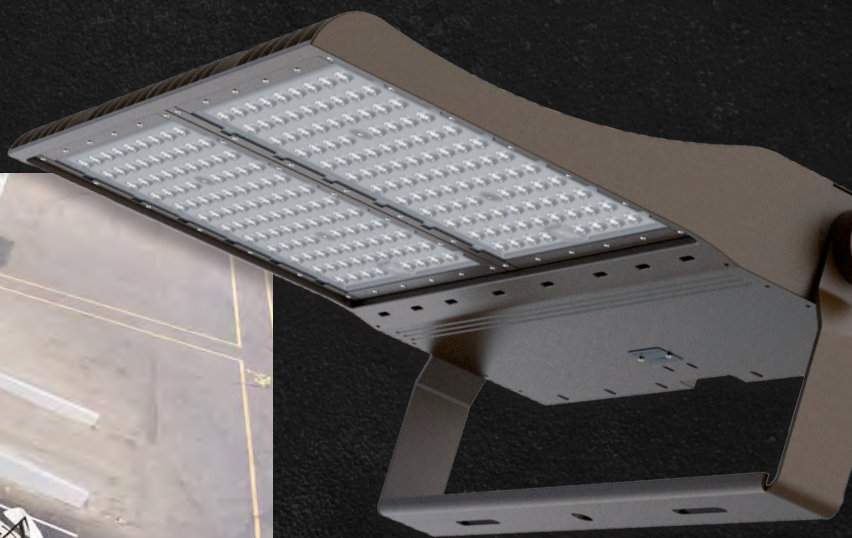
MINIMISED LIGHT POLLUTION

UPWARD & BACKWARD SPILL LIGHT PROTECTION

IMPROVED AREA SAFETY

TAILORED LENSES

**Includes lightning surge protection*



IK10

IMPACT RATING

NOCTUA

DIRECTIONAL FLOOD LIGHT WITH SUPERIOR ILLUMINATION FOR DOCKS



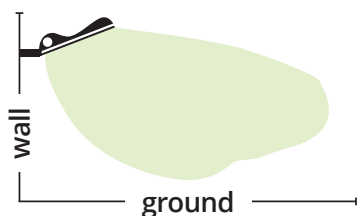
enLightens' Noctua is a directional flood light which has been designed to maximise area illumination and light uniformity. Designed with an asymmetrical forward throwing light, which provides 30% better illumination uniformity. The Noctua has been engineered to minimise glare on docks and has an IP66 ingress protection and is IK08 impact resistant.

BENEFITS OF A FORWARD THROWING LEN

enLighten's Noctua LED floodlight



Tilted upwards by 20°



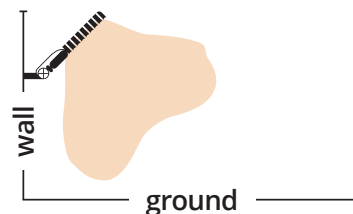
LESS LIGHT SPILLAGE

30% BETTER
LIGHT UNIFORMITY

Common LED floodlight



Tilted upwards by 45°



3X MORE GLARE

UP TO **10% MORE**
LIGHT POLLUTION

NEW

TAURO BLACK

HIGH EFFICACY LED WAREHOUSE HIGH BAY

The Tauro Black high bay has been designed for the warehouse environment, it offers the ultimate in vertical illumination using customised racking optics to improve pick accuracy and productivity within the warehouse. This versatile light also offers superior uniform horizontal lighting throughout the facility to ensure a safe workplace.

Loading docks can be spasmodic in activity levels, so the Tauro Black high bay can be optionally fitted with motion sensors.

**UP TO 40%
MORE EFFICIENT**
THAN STANDARD LED HIGH BAYS



**ELIMINATE
WASTE LIGHT**



**SYMMETRIC &
ASYMMETRIC
LENS**

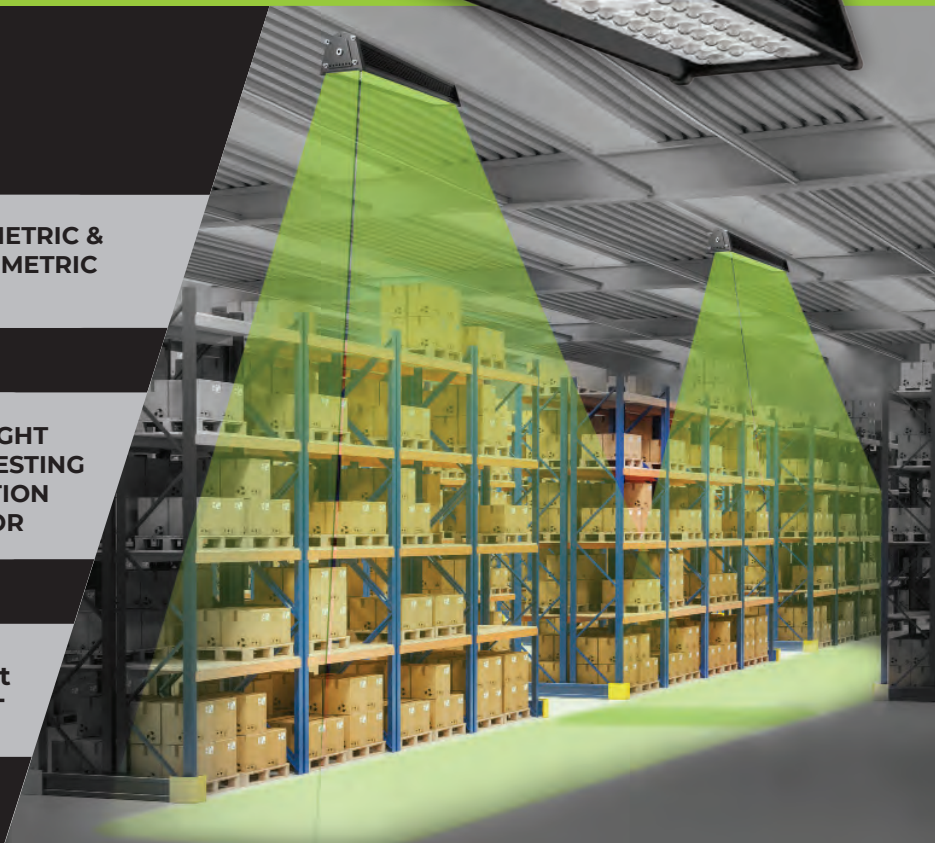
**OPTIONAL
LIGHTING
CONTROLS**



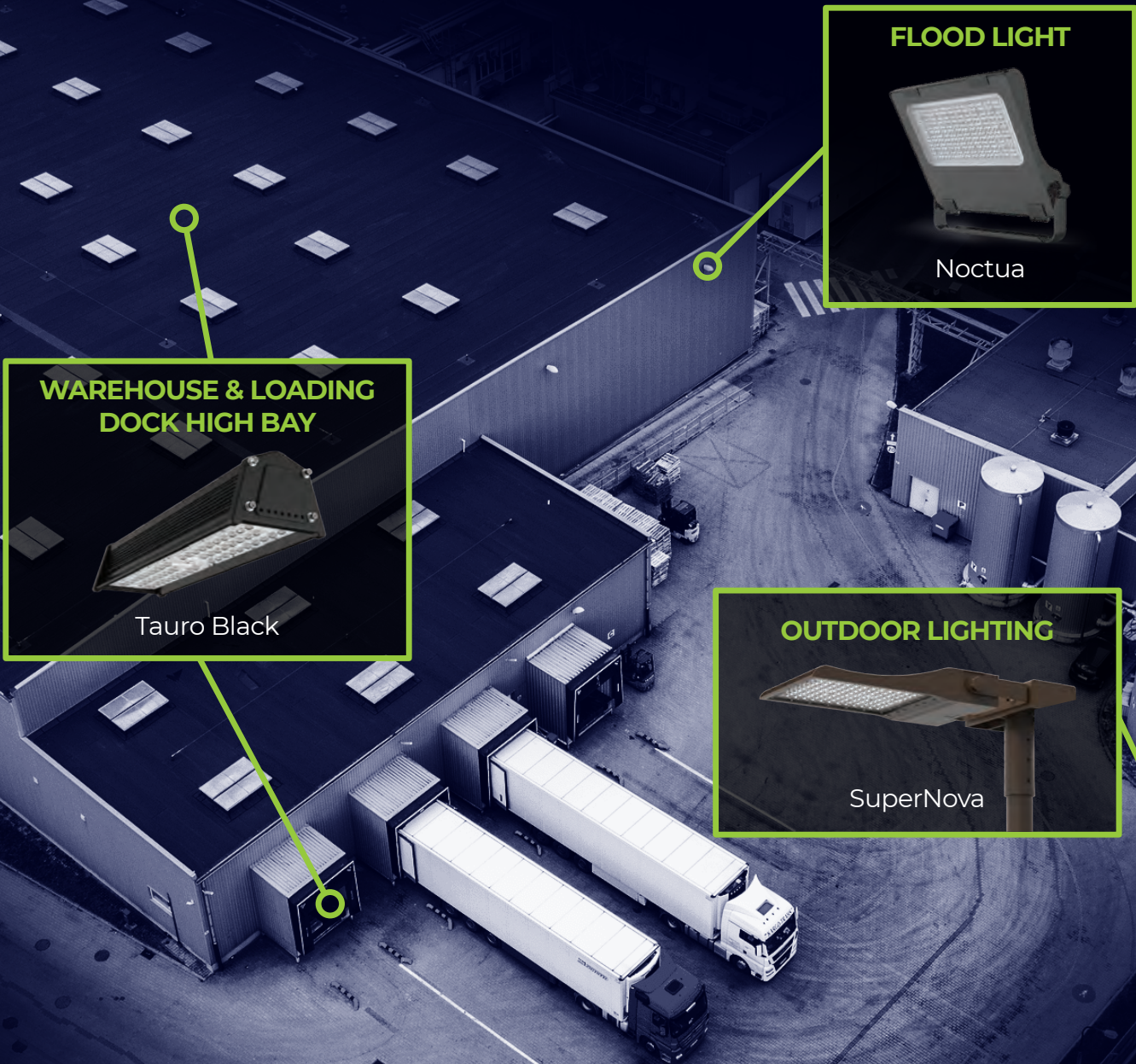
**DAYLIGHT
HARVESTING
& MOTION
SENSOR**

**PEAK
PERFORMANCE**

165 Lumen
per watt
EFFICACY



MAXIMISE SAFETY, PRODUCTIVITY AND ENERGY EFFICIENCY AT YOUR DISTRIBUTION CENTRE TODAY!



enLighten

Innovation in Lighting Solutions

8/78 Reserve Road, Artarmon, NSW 2064 Australia

Call us on 1800 365 444 | enlighten.com.au