

# Yindi

## LED Post Top Luminaire



### Installation Instructions

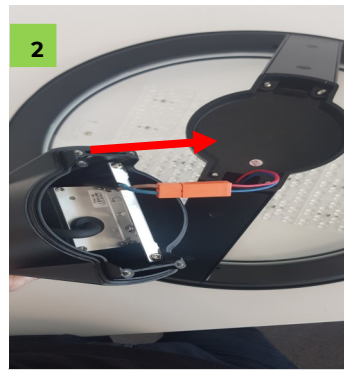
All electrical work must be carried out by a qualified Electrician in accordance with the latest wiring regulations .

Light must be operated within its specified operating parameters and in accordance with our warranty requirements. These documents are available on our website.

### Installation



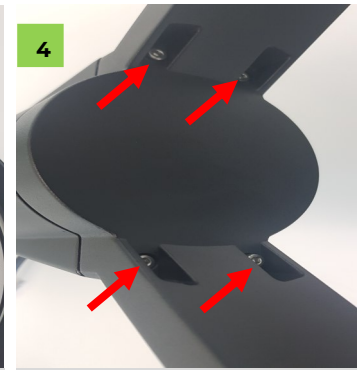
1 Place main light body on the ground, be careful not to scratch the housing. Connect the DC plugs.



2 Connect the stem onto the light. Ensure cables are not damaged.



3 Picture showing the stem on the main part of the light.



4 Tighten the 4 bolts with an Allen key to 1.2Nm.



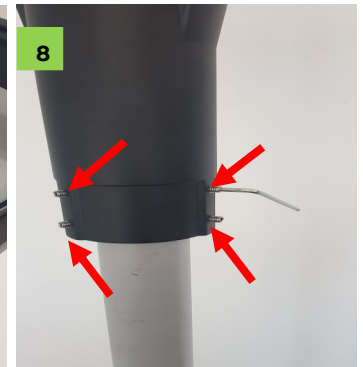
5 Connect the cable from the light to the wiring in the pole.



6 Slip light onto the pole. The models YPTxx-47Lx-60 fit a 60mm OD round pole, the models YPTxx-47Lx-76 fit a 76mm OD round pole.



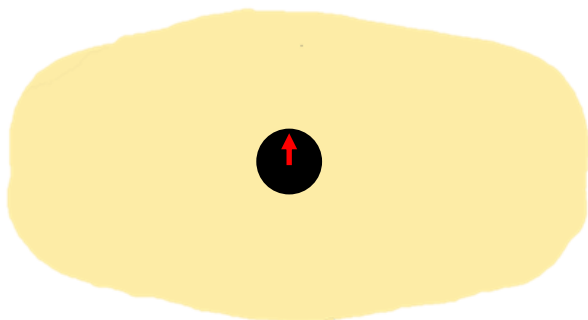
7 The arrow on the LED panel indicates the light direction. For lens types L1 to L7 correctly orientating the light is critical. See details on next page.



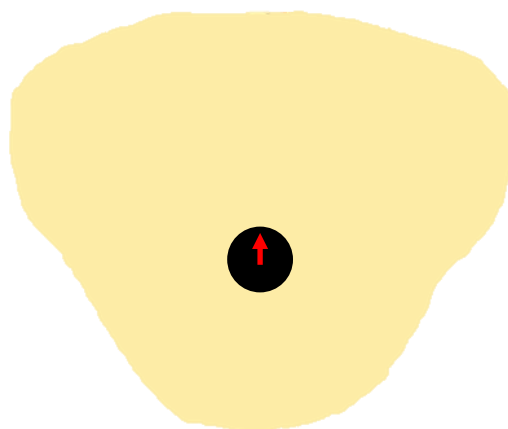
8 Secure the light to the pole by tightening the 4 grub screws with an Allen key to 8Nm.

## Light Orientation

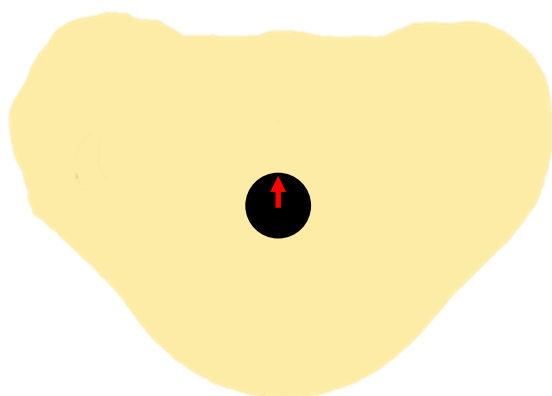
The diagrams below are an indicative representation of the light output of the different lenses. The red arrow shows the orientation of the light fitting, refer to point 7 on previous page.



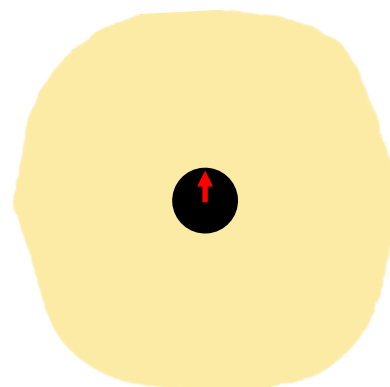
Lens types L1 & L2



Lens types L4 & L5

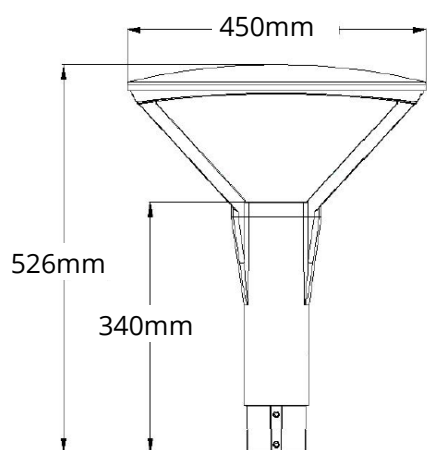


Lens type L3



Lens types L6 & L7

## Dimensions



Key Luminaire Specifications				
Model	Version	Power Rating	Ambient temperature	Weight
YPT20	Yindi 20W	100-277VAC 50/60Hz, 20W	-30 - +50°C	7.6kg
YPT30	Yindi 30W	100-277VAC 50/60Hz, 30W	-30 - +50°C	7.6kg
YPT40	Yindi 40W	100-277VAC 50/60Hz, 40W	-30 - +50°C	7.8kg
YPT60	Yindi 60W	100-277VAC 50/60Hz, 60W	-30 - +50°C	8.1kg
YPT75	Yindi 75W	100-277VAC 50/60Hz, 75W	-30 - +50°C	8.2kg
YPT100	Yindi 100W	100-277VAC 50/60Hz, 100W	-30 - +50°C	8.2kg

May 2021 E&OE