

# Skyline Backlit LED Panel



## Installation Instructions



NOTE: All electrical work must be carried out by a licensed electrician as per the latest AS 3000 wiring regulations.  
WARNING: All maintenance is to be performed by the supplier, a service agent or qualified person. De-energize all supplies before maintenance. The light must be operated within its specified operating parameters and in accordance with our warranty requirements. These documents are available on our website. This luminaire contains non-user replaceable lamps. Do not disassemble the panel as this will void the warranty. The light must be operated within its specified operating parameters and in accordance with our warranty requirements. These documents are available on our website. The LED driver must be connected to the panel **before** the driver is connected to mains power to avoid damage to the LEDs. Indoor use only.

### NON-DIMMABLE DRIVERS

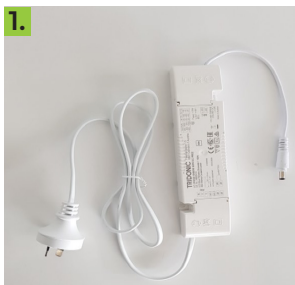


1. The drivers are pre-wired with a mains and DC plug.



2. Connect DC plug to the plug on panel and twist plug to lock. Then plug driver into mains power.

### CASAMBI READY DRIVERS CASAMBI



1. The drivers are pre-wired with a mains and DC plug.



2. Connect DC plug to the plug on panel and twist plug to lock. Then plug driver into mains power.

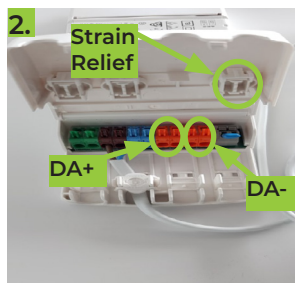


User Manual and download links for the casambi app are available on [www.casambi.com](http://www.casambi.com)

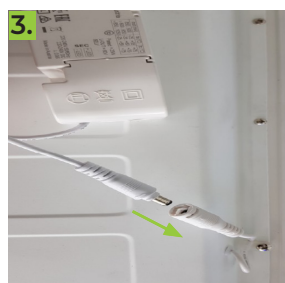
### DALI-2 DRIVERS



1. The DALI-2 drivers are pre-wired with a mains and DC plug.



2. Open cover and connect DALI wires into DALI terminals. DALI wires can be looped in and out. Use cable clamps as strain relief. Close cover.



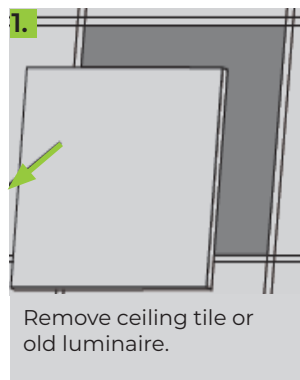
3. Connect DC plug to the plug on panel and twist plug to lock. Then plug driver into mains power.

# Skyline Backlit LED Panel

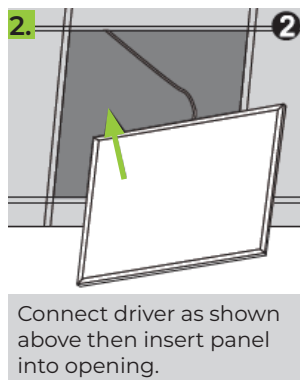


## Installation Instructions

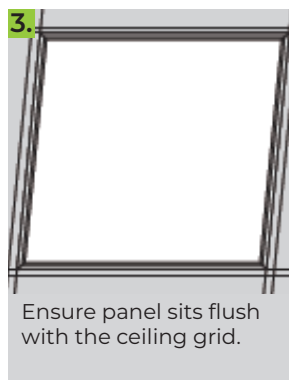
### INSTALLING RECESS MOUNT (T-BAR CEILING)



Remove ceiling tile or old luminaire.

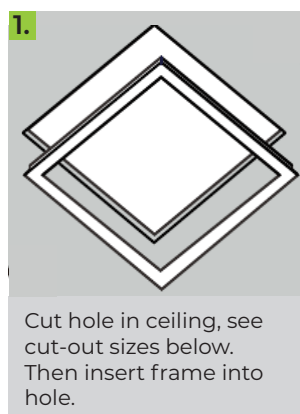


Connect driver as shown above then insert panel into opening.

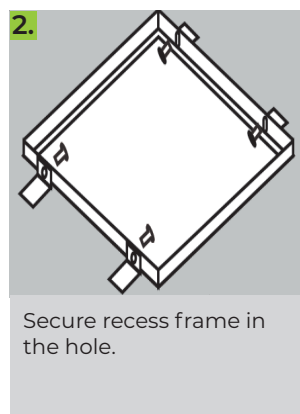


Ensure panel sits flush with the ceiling grid.

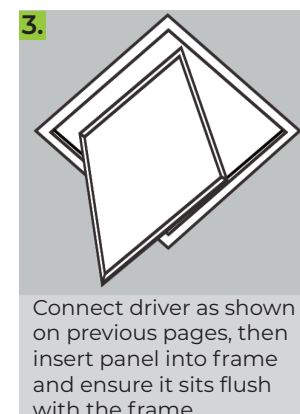
### INSTALLING RECESS MOUNT (PLASTER FRAME)



Cut hole in ceiling, see cut-out sizes below. Then insert frame into hole.

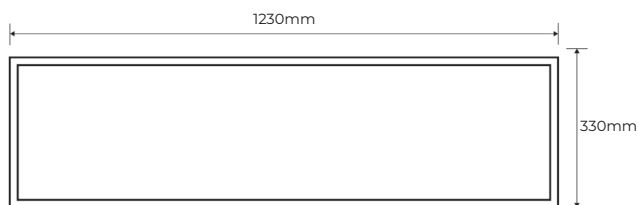


Secure recess frame in the hole.

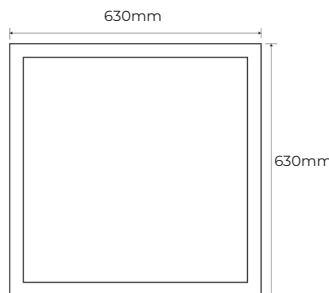


Connect driver as shown on previous pages, then insert panel into frame and ensure it sits flush with the frame.

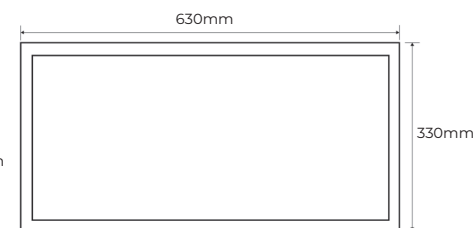
#### R-001



#### R-002



#### R-003



Part Number	Dimensions	Cut-out Dimensions	Fits Skyline Models
R-001	1230 x 330 x 40mm	1210 x 310mm	SKY2-1230
R-002	630 x 630 x 40 mm	610 x 610mm	SKY2-6060
R-003	630 x 330 x 40mm	610 x 310mm	SKY2-6030

# Skyline Backlit LED Panel



## Installation Instructions

### INSTALLING SURFACE MOUNT

**1**

Set aside all pieces for construction

**2**

Connect all panels together to form the mounting bracket

**3**

Using tabs of mounting bracket to drill holes into roof and fix mounting bracket to the ceiling

**4**

Remove single panel

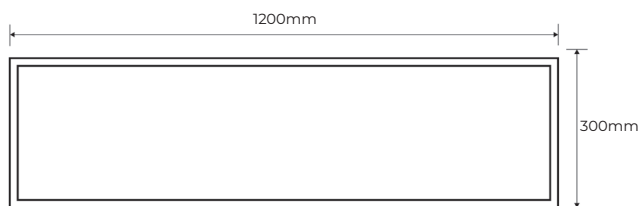
**5**

Connect driver as shown on page 1, then slide fitting into mounting bracket

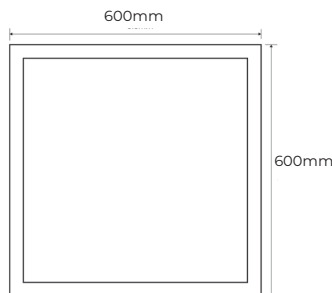
**6**

Re-insert panel

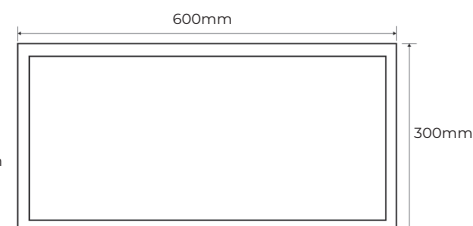
#### SM2-001



#### SM2-002



#### SM2-003



Part Number	Dimensions	Fits Skyline Models
SM2-001	300 x 1200 x 63mm	SKY2-1230
SM2-002	600 x 600 x 63mm	SKY2-6060
SM2-003	300 x 600 x 63mm	SKY2-6030