

Tauro Black

Highbay Luminaire with Specialised Optics

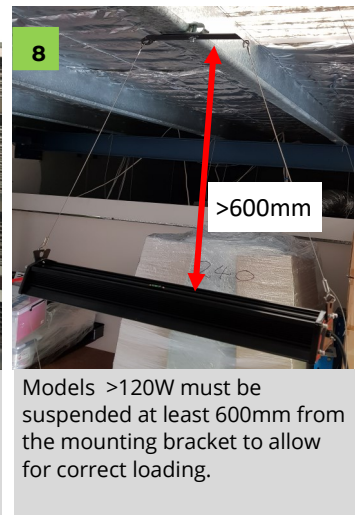
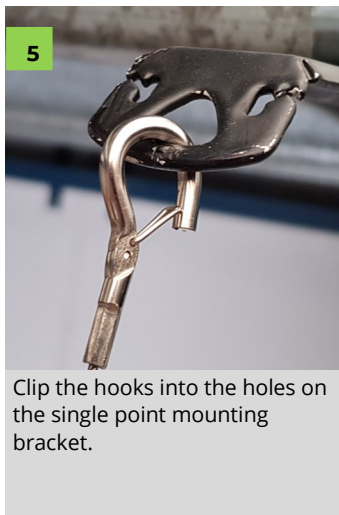
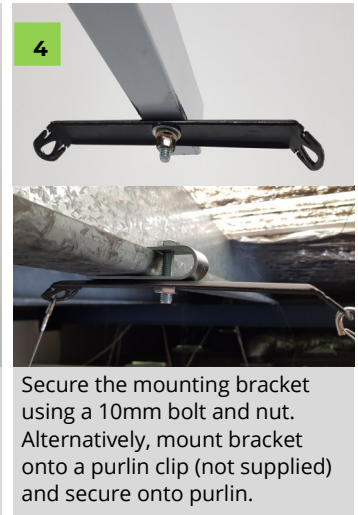
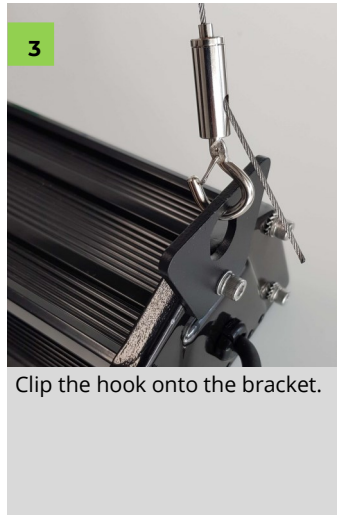


Installation Instructions



NOTE: All electrical work must be carried out by a licensed electrician as per the latest AS 3000 wiring regulations. This luminaire contains non-user replaceable lamps. The light must be operated within its specified operating parameters and in accordance with our warranty requirements. These documents are available on our website.

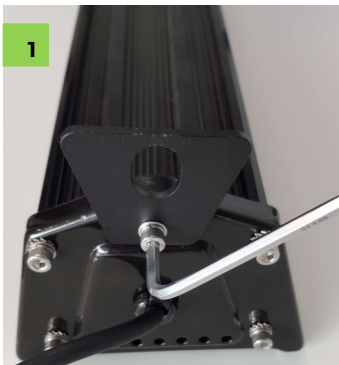
Mounting using the Single Point Mounting Bracket



Key Luminaire Specifications

Model	Version	Power Rating	Ambient Temperature	IP Rating	IK Rating	Dimensions	Weight
TB30	Tauro Black 30W	220-240V 50/60Hz, 30W	-30°C to +50°C	IP65	IK10	280x137x102mm	1.9kg
TB60	Tauro Black 60W	220-240V 50/60Hz, 60W	-30°C to +50°C	IP65	IK10	486x137x102mm	3.4kg
TB90	Tauro Black 90W	220-240V 50/60Hz, 90W	-30°C to +50°C	IP65	IK10	718x137x102mm	4.7kg
TB120	Tauro Black 120W	220-240V 50/60Hz, 120W	-30°C to +50°C	IP65	IK10	948x137x102mm	5.7kg
TB150	Tauro Black 150W	220-240V 50/60Hz, 150W	-30°C to +50°C	IP65	IK10	1178x137x102mm	6.9kg
TB180	Tauro Black 180W	220-240V 50/60Hz, 180W	-30°C to +50°C	IP65	IK10	718x275x102mm	8.5kg
TB240	Tauro Black 240W	220-240V 50/60Hz, 240W	-30°C to +50°C	IP65	IK10	950x299x102mm	10.3kg

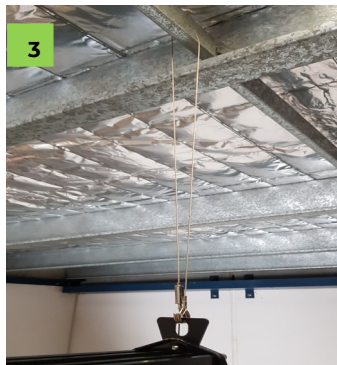
Suspension Mount using the Stainless Steel Suspension Cables



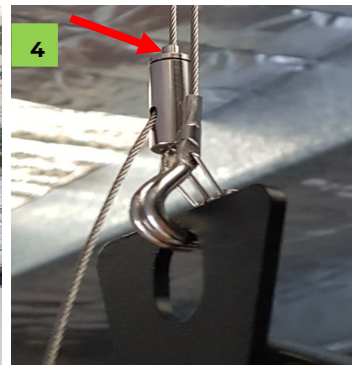
1
Connect brackets onto ends of Tauro Black fitting using a 4 mm Allen key.



2
Clip the hook onto the bracket.



3
Loop the stainless steel cable around the beam and clip the other hook into the bracket.

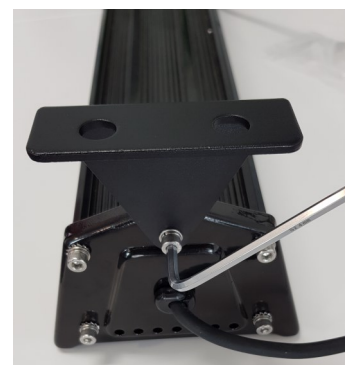


4
Press down on the adjustment toggle to adjust the height and level the fitting.

Surface Mount using the Surface Mount Brackets (optional accessory)



Surface mount brackets
* Part no. **TB-Bracket-S** for 30W — 150W models
* Part no. **TB-Bracket-L** for 180W & 240W models

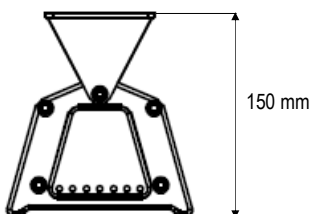


Connect the surface mount brackets onto each end using a 4mm Allen key (30W—150W models). Then mount the fitting to the ceiling.

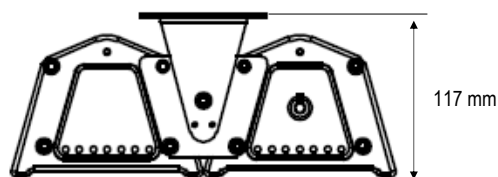


Connect the surface mount brackets to each end using the screws and the nut & bolt. (180W & 240W models). Then mount the fitting to the ceiling.

Dimensions with optional Surface Mount Brackets



30W—150W models



180 & 240W models