

Zorro 2

LED Area and Pathway Luminaire

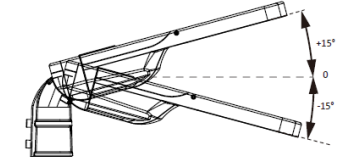
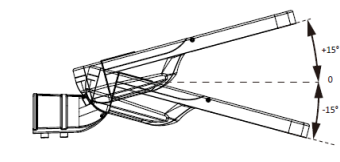
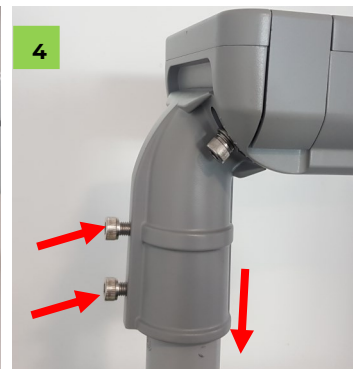
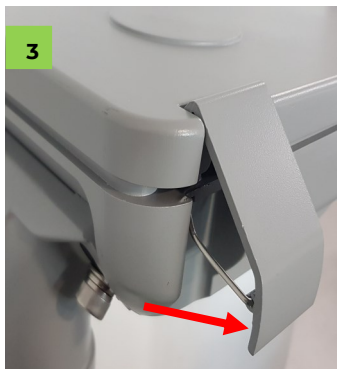


Installation Instructions

All electrical work must be carried out by a qualified Electrician in accordance with the latest wiring regulations

Light must be operated within its specified operating parameters and in accordance with our warranty requirements. These documents are available on our website.

Installation

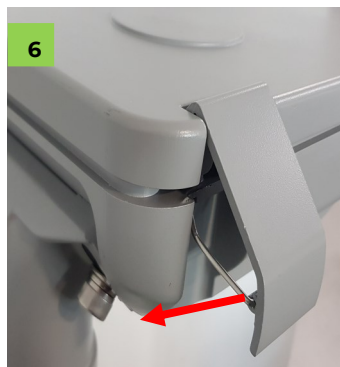
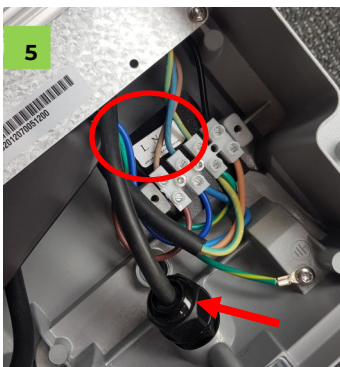


Loosen the bolts on the mounting bracket and adjust tilt angle as desired. The tilt angle can be adjusted from -15° to $+15^{\circ}$ in steps of 5° (tilt indicator circled in red). Tighten bolts (17Nm) to secure.

For vertical mount turn the bracket 180 degrees, select the desired tilt angle and tighten bolts (17Nm) to secure.

Unclip the buckles to open housing.

Feed cable into light fitting, slip pole adaptor over pole and secure by tightening the bolts to 17 Nm. Do not overtighten.

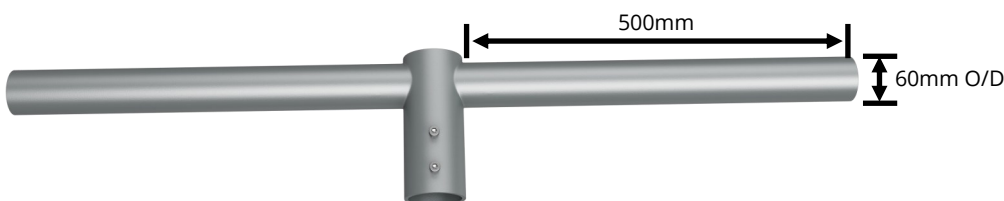


Connect mains wires to terminal block. Tighten cable gland.

Close housing and clip buckles to secure.

Mounting Adaptors

Double Arm Adaptor (part # ZWB-CrosArm)



Arms 500mm long, 60mm O/D. Fits round pole 76mm O/D

Pole Reducer (part # ZWB-PoleRed)



Fits round poles 76mm O/D

40-60mm adaptor (part # ZWB-ConAdap)



Increases the size of a 42mm dia pole to 60mm dia

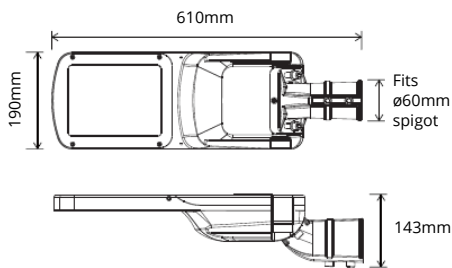
Wall mount (part # ZWB-15 Degrees)



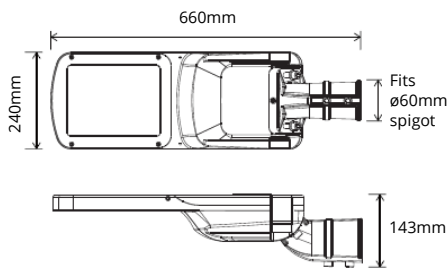
Allows wall mounting a Zorro 2 luminaire. Spigot diameter 60mm. Spigot is angled 15 degrees upwards.

Dimensions

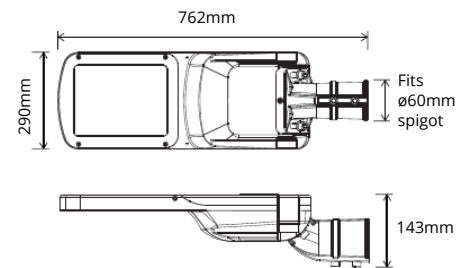
15W, 40W, 60W



80W, 120W



150W, 200W



Key Luminaire Specifications

Model	Version	Power Rating	Ambient temperature	Weight
ZAL15	Zorro 2 15W	200-240VAC 50/60Hz, 15W	-40 - +50°C	4.7kg
ZAL40	Zorro 2 40W	200-240VAC 50/60Hz, 40W	-40 - +50°C	4.7kg
ZAL60	Zorro 2 60W	200-240VAC 50/60Hz, 60W	-40 - +50°C	4.7kg
ZAL80	Zorro 2 80W	200-240VAC 50/60Hz, 80W	-40 - +50°C	5.8kg
ZAL120	Zorro 2 120W	200-240VAC 50/60Hz, 120W	-40 - +50°C	5.8kg
ZAL150	Zorro 2 150W	200-240VAC 50/60Hz, 150W	-40 - +50°C	8.1kg
ZAL200	Zorro 2 200W	200-240VAC 50/60Hz, 200W	-40 - +50°C	8.1kg

June 2021 E&OE