



enLighten

Emergency Exit Sign

ONE BOX SOLUTION

with Slide'n'Connect
quick fit bracket

Mirador Exit

Maintained LED Exit Sign with Slide'n'Connect quick fit bracket



Includes
a DECAL
MULTIPACK



The Mirador Exit Sign is a highly reliable, long life and cost effective product that complies with AS/NZS 2293.

The Slide'n'Connect quick fit bracket allows for fast ceiling or wall mount installation, simple wiring and ease of maintenance.

This one box solution has a range of decals for every location. Our Exit Sign uses environmentally friendly LiFePO₄ battery.

This product performs the dual role as a Maintained Exit Sign with max 24m viewing distance & a Maintained Emergency Light with D3.2 emergency classification. It is well suited for use in commercial, educational, retail, strata & health care buildings.

Self-test is a touch-free function that comes standard with every Mirador product. Self-test automatically conducts regular duration tests every 3 months. The latest test results are always displayed via status indicators for easy viewing. This provides ease of compliance and peace of mind knowing that any functional issue on the product can quickly be identified.

OPTIONS AND BENEFITS

- **Slide'n'Connect quick fit bracket** for easy installation
- **Single or double sided diffuser** with a selection of directional decals included
- **Max. viewing distance:** 24m
- **Emergency classification:** D3.2
- **Expected LED life** > 110,000 hours @L70
- **Emergency duration** > 180 minutes
- **IP20** - Ingress protection
- **Duration Self-Test:** Automatic duration testing every 3 months
- **Long life LiFePO₄ battery**
- **5 year warranty** (battery 2 year)

APPLICATIONS



CORRIDORS



HOSPITALS



OFFICES



RETAIL



SCHOOLS



STRATA



UNIVERSITY
CAMPUSES

FEATURES



CEILING
MOUNT



D3.2



EASY
INSTALL



INGRESS
PROTECTION



LiFePO₄
BATTERY



SAFETY
COMPLIANCE



SELF
TEST



WALL
MOUNT

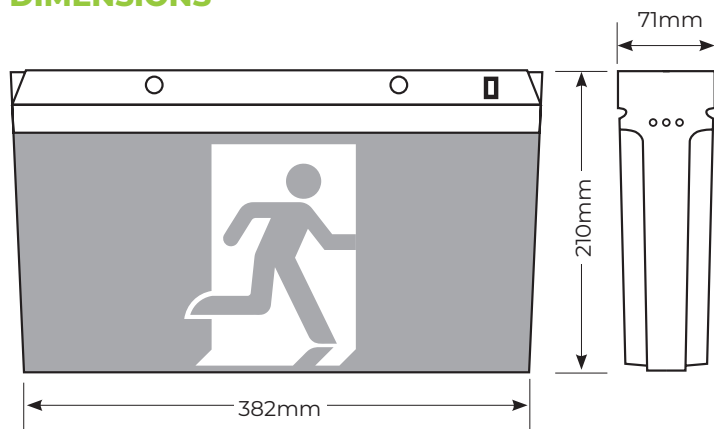


YEAR
WARRANTY

PRODUCT RANGE

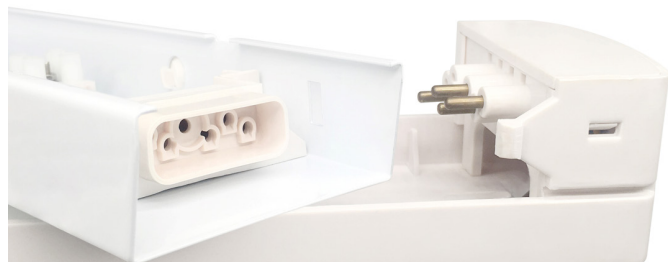
Model #	Rated Power (W)	Dimensions (mm)	Weight (kg)
MIRA-EXIT-SC	2	382 x 71 x 210	1.5

DIMENSIONS



SLIDE'N'CONNECT QUICK FIT BRACKET

The steel slide'n'connect bracket makes installation quick, wiring simple and ensures ease of maintenance.



COMPLIANCE

The Mirador Exit meets or exceeds all relevant standards and regulatory requirements.

For a full compliance and testing list visit www.enlighten.com.au. IES files, warranty, installation and product guides are also available for download.

Sold nationally through major electrical wholesalers.



TECHNICAL INFORMATION

Optical

Light source	Osram LEDs
Mode of operation	Maintained
Emergency duration	> 180 minutes

Electrical

Power consumption (W)	4W
Operating voltage & frequency	220 - 240V AC, 50 Hz
Battery type	LiFePO4
Battery rating	3.2V 1500mAh
Protection	Overcharge, low voltage disconnect, overcurrent, short circuit

Environmental

IP rating	IP20
Weight	1.5kg
Ambient temperature range	0°C to +40°C
Material Composition (body)	Flame retardant ABS body, powder coated metal bracket, PS diffuser
Decals	Arrow Left, Arrow Right, Running Man

Controls

Indicators	Status LEDs
------------	-------------

Compliance

AS/NZS 2293 Classification	D3.2; 24m Max. viewing distance
----------------------------	---------------------------------

Warranty*	5 years (battery 2 year)
-----------	--------------------------

Data subject to change without notice
* Refer to warranty policy

