

Chamaeleon Deco

Charcoal Black Emergency



Installation Instructions



NOTE: All electrical work must be carried out by a licensed electrician as per the latest AS 3000 wiring regulations.

WARNING: All maintenance and battery change is to be performed by qualified personnel only.

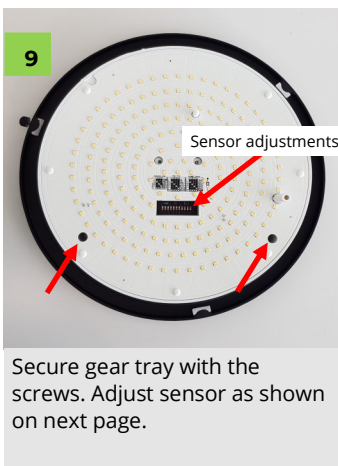
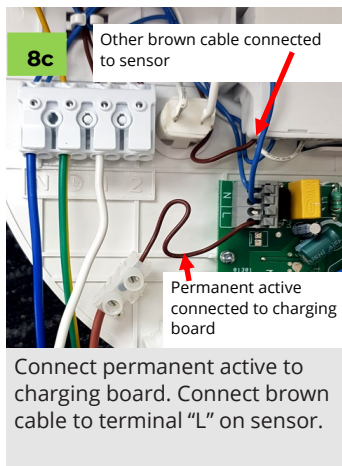
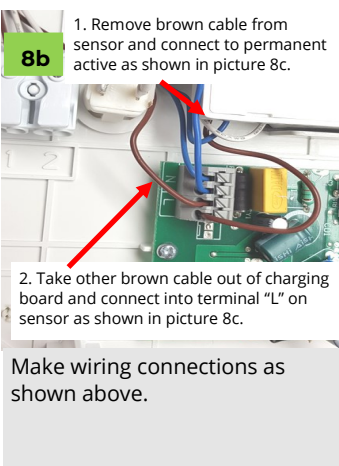
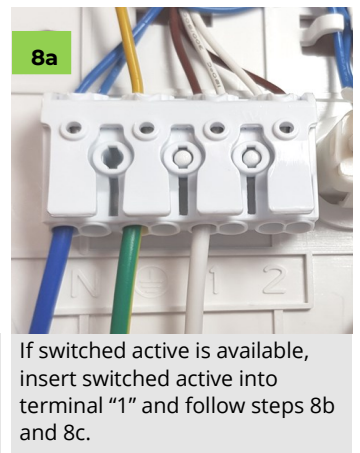
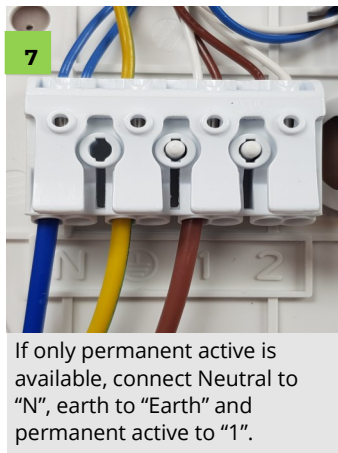
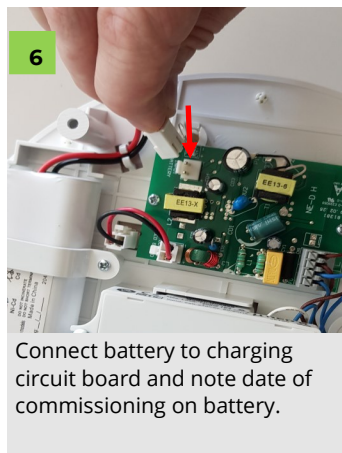
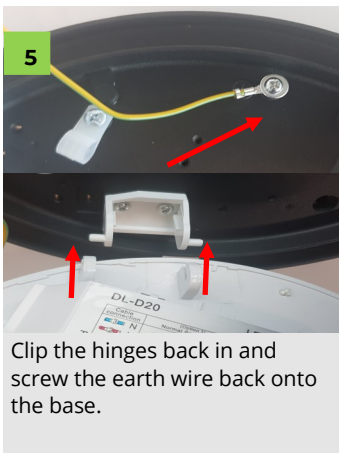
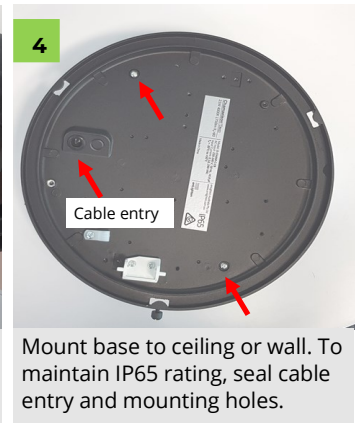
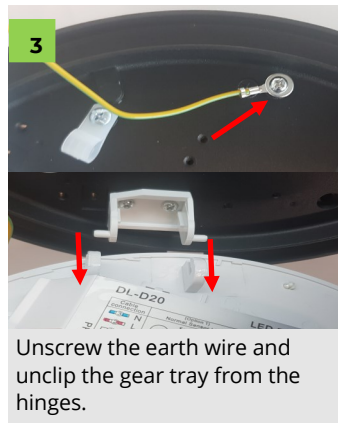
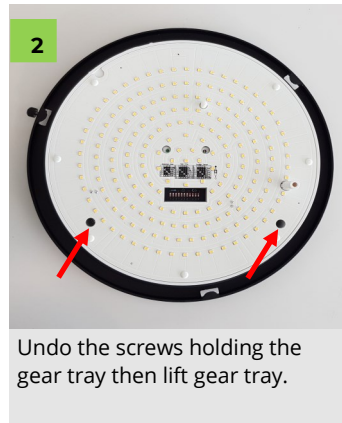
De-energize all supplies before maintenance. This luminaire contains non-user replaceable lamps.

The light must be operated within its specified operating parameters and in accordance with our warranty requirements.

These documents are available on our website.

The fitting requires an un-switched power supply to avoid draining the battery unnecessarily. Emergency fittings should be installed within a reasonable timeframe after purchase as extended storage may shorten the battery life. The battery will be damaged if it is plugged into the charging board and left without mains power connected for periods greater than 3 days.

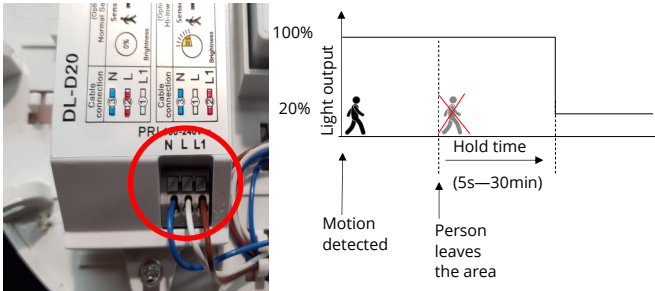
Mounting



Changing the Standby Light Level

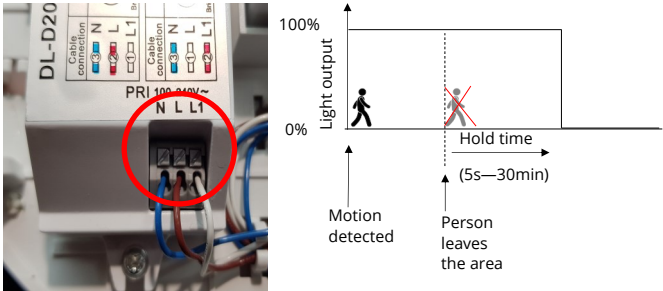
The standby light level can be set to either 0% or 20%. Factory setting is 20%. To change the standby light level, swap the position of the brown and white wire on the driver.

20% Standby



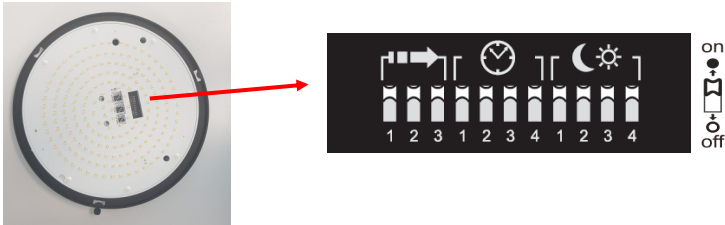
For 20% standby light ensure blue wire is in “N” terminal, white wire in “L” terminal and brown wire in “L1” terminal.

0% Standby



For 0% standby light ensure blue wire is in “N” terminal, brown wire in “L” terminal and white wire in “L1” terminal.

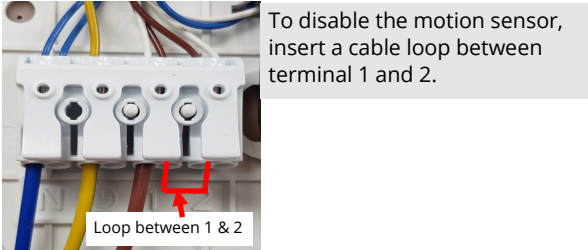
Dip Switch Settings referred to below



Microwave Sensor Detection Range

The detection range/sensitivity of the sensor may be adjusted if required. Default setting is **100%**.

Disabling the Sensor



To disable the motion sensor, insert a cable loop between terminal 1 and 2.

Sensor Range			
Dipswitch ->	1	2	3
100%	ON	ON	ON
75%	OFF	ON	ON
50%	ON	OFF	ON
25%	ON	ON	OFF
10%	OFF	OFF	OFF



Hold Time

Hold time is the time the fitting remains at 100% brightness after motion is no longer detected. Default setting is **5s**.

Hold Time				
Dipswitch ->	1	2	3	4
5s	ON	ON	ON	ON
30s	OFF	ON	ON	ON
1min	ON	OFF	ON	ON
5min	ON	ON	OFF	ON
15min	ON	ON	ON	OFF
30min	OFF	OFF	OFF	OFF



Daylight Sensor

Please note:

The daylight sensor can only be used if the standby light level is set to 0% (off), see top of this page.

If the standby light level is set to 20%, the daylight sensor has to be set to “disabled”.

Daylight Sensor				
Dipswitch ->	1	2	3	4
2lux	ON	ON	ON	ON
5lux	OFF	ON	ON	ON
10lux	ON	OFF	ON	ON
30lux	ON	ON	OFF	ON
50lux	ON	ON	ON	OFF
Disabled	OFF	OFF	OFF	OFF

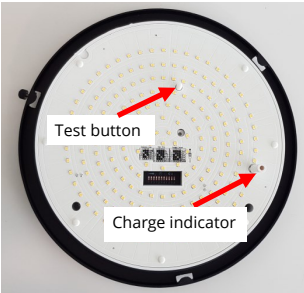


The daylight sensor may be used to activate the motion sensor at night. When the ambient light level drops below the selected value, the motion sensor will be active and will switch the fitting to full light when motion is detected. When the ambient light level exceeds the selected value, the motion sensor will not be active. Default setting is **disabled**. For most situations, a setting of 30lux is suitable.

Indicator and Simulation of Normal Mains Power Failure

The red charge indicator is illuminated when there is a battery connected and mains power is available.

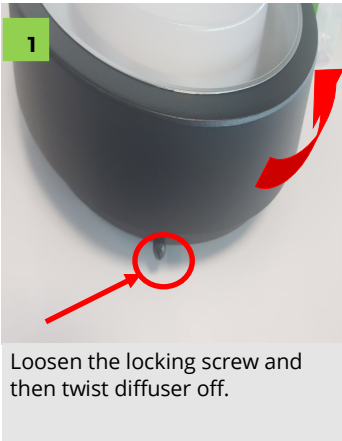
Pressing the test button will simulate mains power failure and the fitting will switch to battery operation. When the test button is released, the fitting will revert to normal operation.



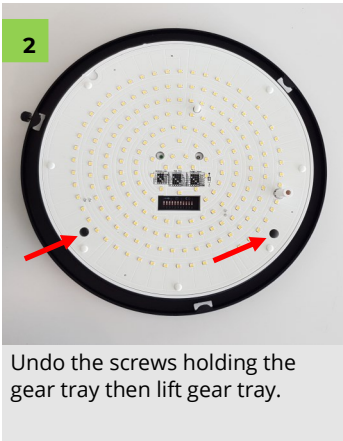
Battery Replacement

This luminaire requires a replacement of the battery when it no longer meets its rated duration of operation in emergency mode i.e. less than 90 minutes, after receiving full charge. Follow the instructions below to carry out the battery replacement.

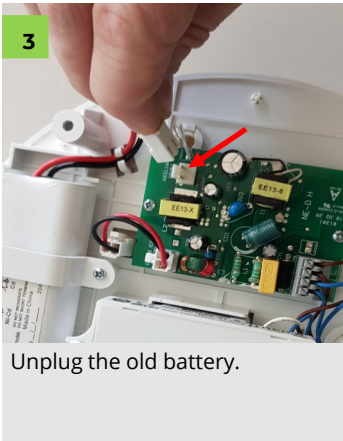
All electrical work must be carried out by a licensed electrician. Switch mains power off before replacing the battery.



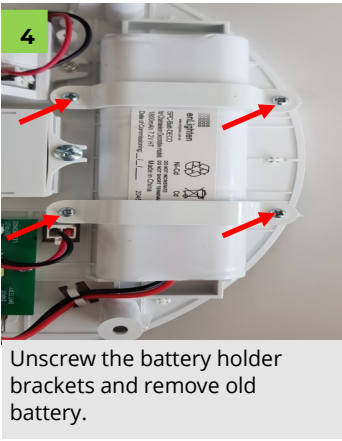
Loosen the locking screw and then twist diffuser off.



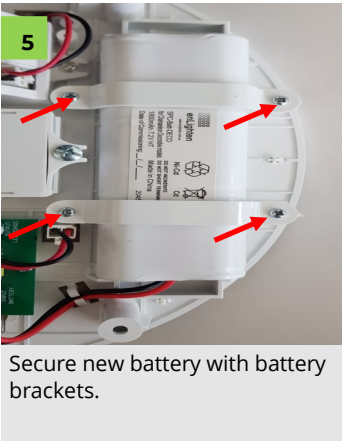
Undo the screws holding the gear tray then lift gear tray.



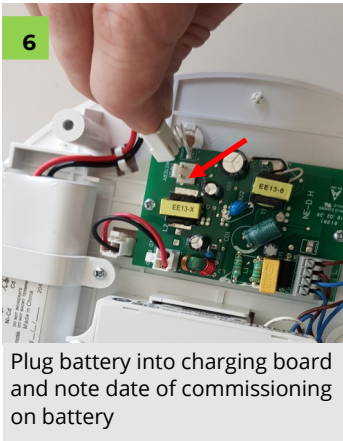
Unplug the old battery.



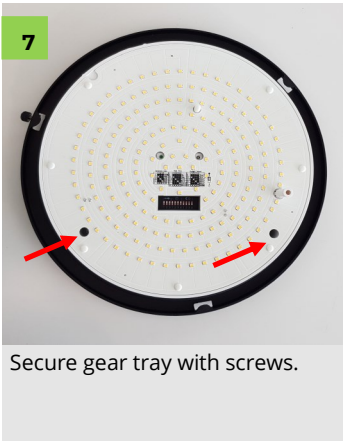
Unscrew the battery holder brackets and remove old battery.



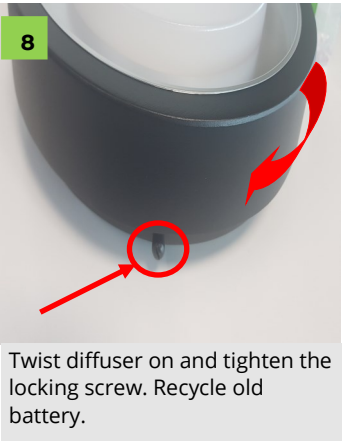
Secure new battery with battery brackets.



Plug battery into charging board and note date of commissioning on battery



Secure gear tray with screws.



Twist diffuser on and tighten the locking screw. Recycle old battery.

Dimensions



Key Luminaire Specifications

Model	Version	Power Rating	Ambient Temperature	IP Rating	IK Rating	Emergency Classification	Battery Type
D-Cham-C-E-CB	Sensor Emergency	220-240V 50/60Hz, 23W	0°C to +40°C	IP65	IK10	D40	7.2V 1800mAh, Ni-CD, battery part no. SPC-BATT-DECO

Cleaning

To clean the fitting use a damp soft cloth. Do not use chemical cleaning products.

March 2021 E&OE