



**MAKE YOUR CAR PARK ENTRANCE
COMPLIANT TO AS 1680**

Intelligent wireless lighting control system for car parks

TAURO BLACK

ENGINEERED TO PERFORM

- Extensive operating life over **130,000 hours**
- Superior protection from physical impact
- Slimline profile perfect for car park entries
- Save money by reducing the number of luminaires required

**5 YEAR
WARRANTY**



EASY TO INSTALL & MAINTAIN

- Lightweight streamlined design for easy handling and installation
- No complicated wiring and simple set and forget commissioning

SMART CONTROLS

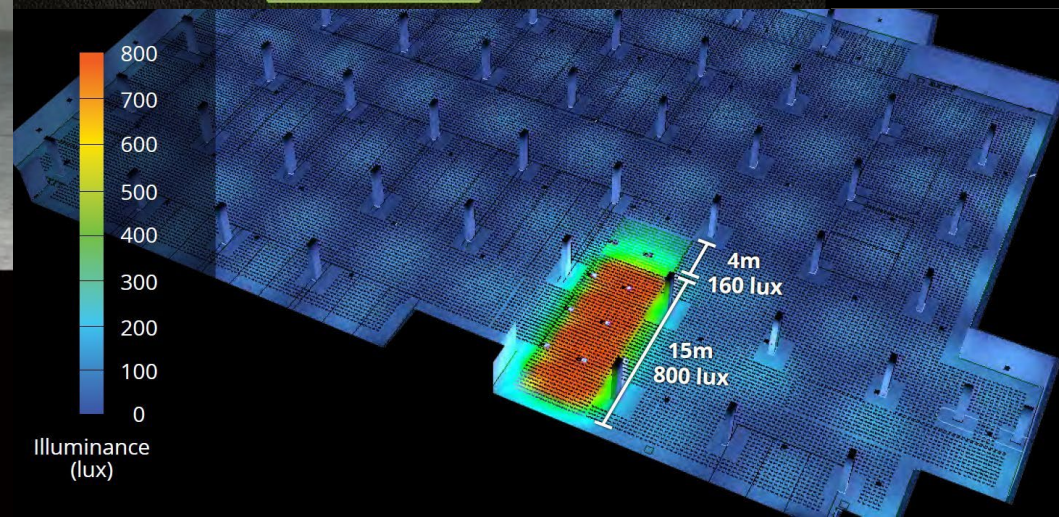
- Integrated WIRELESS control system for car park entrances
- Self-healing WIRELESS mesh network

CECS CONTROLLER

WIRELESSXBEE MODULE



TWILIGHT SENSOR

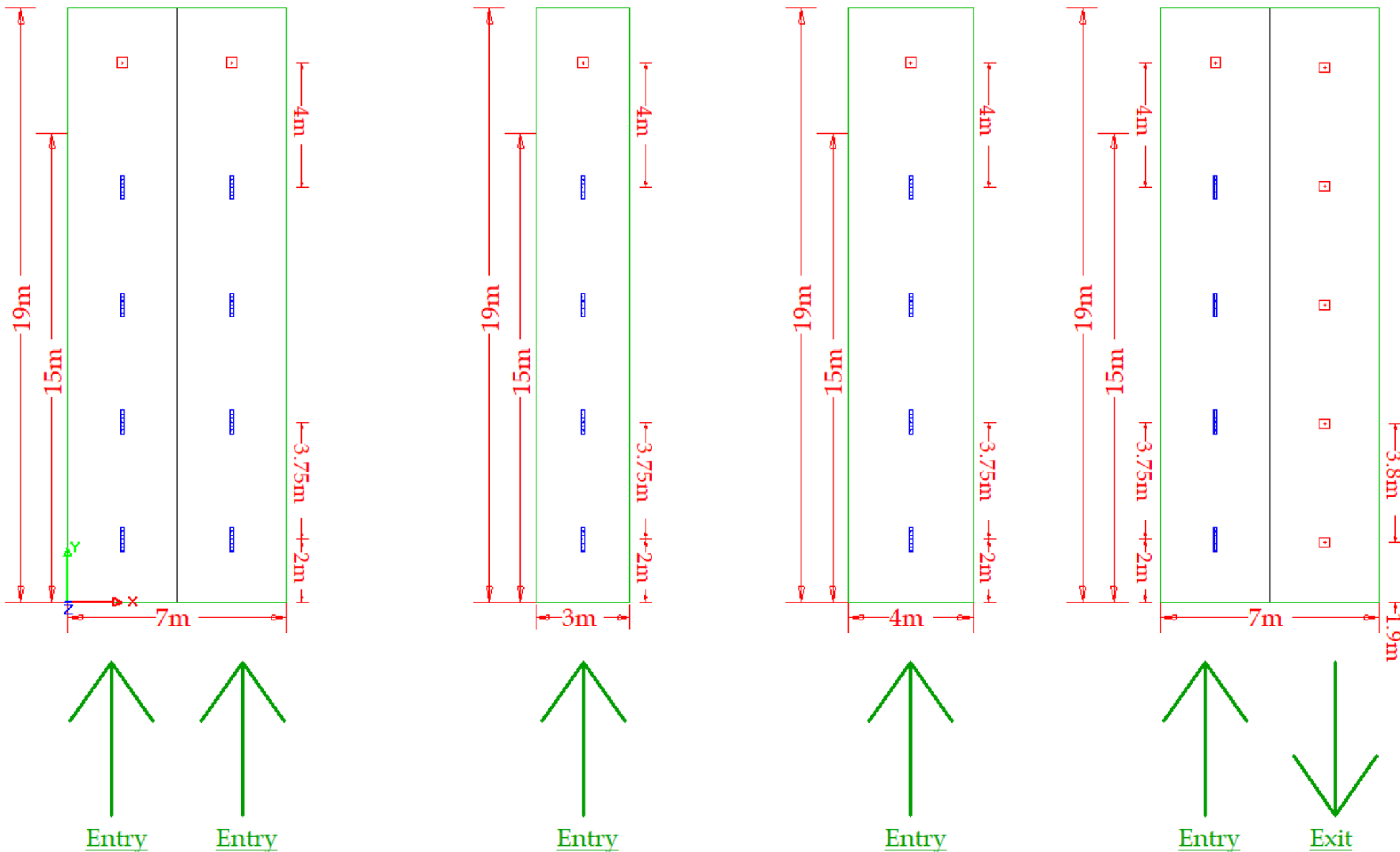


Ceiling / Mounting
Heights: 2.1m to 2.6m

Carpark Entry Spacing Tables for Unpainted Ceiling Types to achieve 800/160 lux during day/night for the first 19 metres as per AS 1680												
Type of Entrance / Ceiling Height	Case 1: 7m Wide Double Entry Lane			Case 2: 3m Wide Single Entry Lane			Case 3: 4m Wide Single Entry Lane			Case 4: 7m Wide Single Entry – Exit Lane		
Up to 2.6m High	Qty	Type	Spacing	Qty	Type	Spacing	Qty	Type	Spacing	Qty	Type	Spacing
Entry 0-15 metres	8	TB90-57-S3-CECS	3.75	4	TB90-57-S3-CECS	3.75	4	TB90-57-S3-CECS	3.75	4	TB90-57-S3-CECS	3.75
Entry 15-19 metres	2	CHAM-C / BL12	4	1	CHAM-C / BL12	4	1	CHAM-C / BL12	4	1	CHAM-C / BL12	4
Exit 0-19 metres										5	CHAM-C / BL12	3.8

Notes

- 1. This design guide is for entry lane only
- 2. Exit lane doesn't require 800/160 lux transitioning during day/night
- 3. Design assumes first 19 metres do not divulge into multiple routes of entry
- 4. If entering traffic can diverge in more than one direction in the first 19 metres, extend the same spacings in all directions of entry
- 5. Wider or more than two entrance lanes will require site specific design
- 6. Luminaire Type: **1xCECS** per entrance
 - Entry 0-15m: **Tauro Black (RF enabled with auto-dimming)**
 - Entry 15-19m & Exit Lane: **Chamaeleon III or Vico Batten (Permanently ON)**
- 7. All distances are measured from centre of lights
- 8. Emergency lighting is not covered here

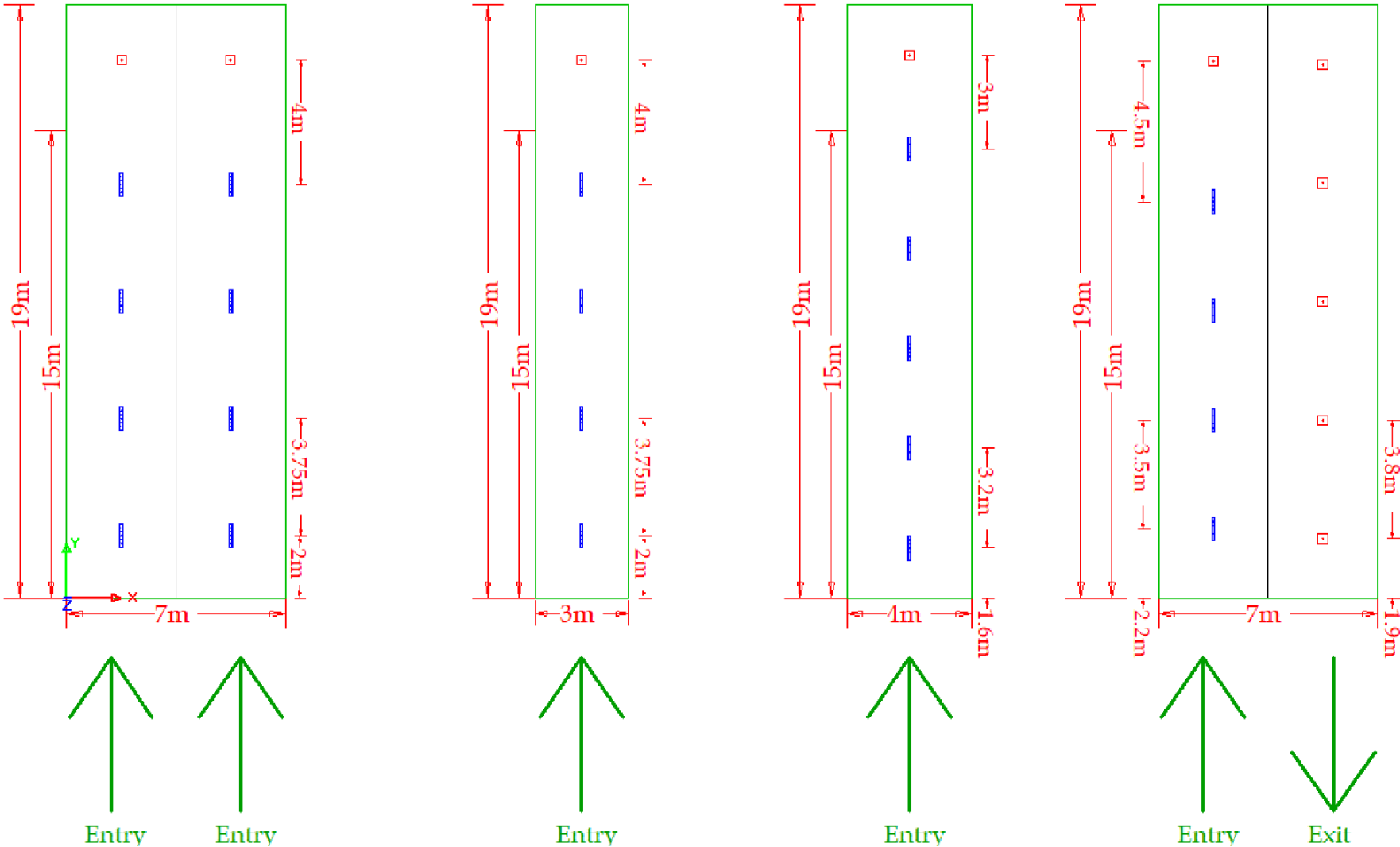


Ceiling / Mounting
Heights: 2.7m to 2.8m

Carpark Entry Spacing Tables for Unpainted Ceiling Types to achieve 800/160 lux during day/night for the first 19 metres as per AS 1680												
Type of Entrance / Ceiling Height	Case 1: 7m Wide Double Entry Lane			Case 2: 3m Wide Single Entry Lane			Case 3: 4m Wide Single Entry Lane			Case 4: 7m Wide Single Entry – Exit Lane		
2.7 – 2.8m High	Qty	Type	Spacing	Qty	Type	Spacing	Qty	Type	Spacing	Qty	Type	Spacing
Entry 0-15 metres	8	TB90-57-S3-CECS	3.75	4	TB90-57-S3-CECS	3.75	5	TB90-57-S3-CECS	3.2	4	TB90-57-S3-CECS	3.5
Entry 15-19 metres	2	CHAM-C / BL12	4	1	CHAM-C / BL12	4	1	CHAM-C / BL12	3	1	CHAM-C / BL12	4.5
Exit 0-19 metres										5	CHAM-C / BL12	3.8

Notes

- 1. This design guide is for entry lane only
- 2. Exit lane doesn't require 800/160 lux transitioning during day/night
- 3. Design assumes first 19 metres do not divulge into multiple routes of entry
- 4. If entering traffic can diverge in more than one direction in the first 19 metres, extend the same spacings in all directions of entry
- 5. Wider or more than two entrance lanes will require site specific design
- 6. Luminaire Type: **1xCECS** per entrance
 - Entry 0-15m: **Tauro Black (RF enabled with auto-dimming)**
 - Entry 15-19m & Exit Lane: **Chamaeleon III or Vico Batten (Permanently ON)**
- 7. All distances are measured from centre of lights
- 8. Emergency lighting is not covered here

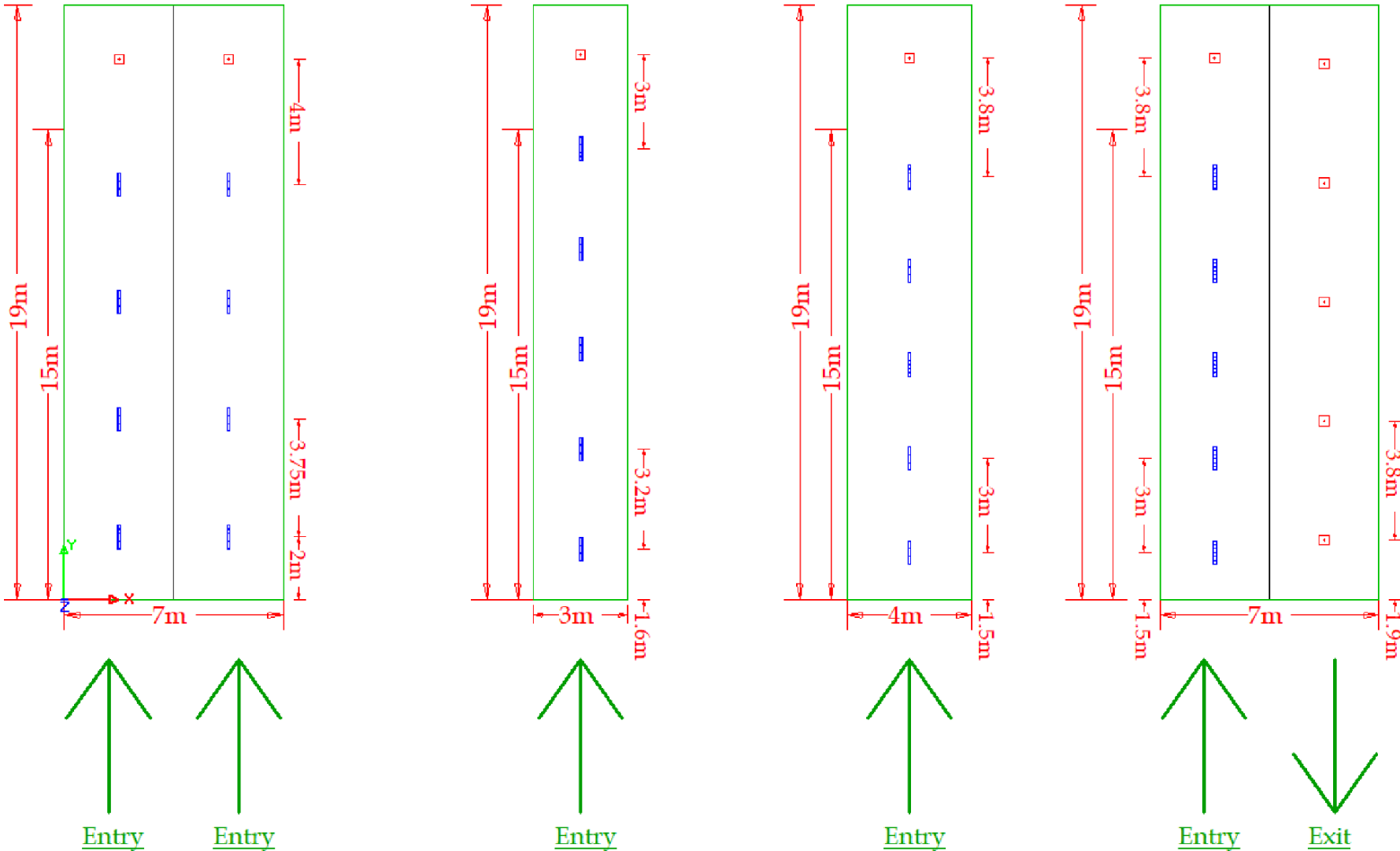


Ceiling / Mounting
Heights: 2.9m to 3.4m

Carpark Entry Spacing Tables for Unpainted Ceiling Types to achieve 800/160 lux during day/night for the first 19 metres as per AS 1680												
Type of Entrance / Ceiling Height	Case 1: 7m Wide Double Entry Lane			Case 2: 3m Wide Single Entry Lane			Case 3: 4m Wide Single Entry Lane			Case 4: 7m Wide Single Entry – Exit Lane		
2.9 – 3.4m High	Qty	Type	Spacing	Qty	Type	Spacing	Qty	Type	Spacing	Qty	Type	Spacing
Entry 0-15 metres	8	TB90-57-S3-CECS	3.75	5	TB90-57-S3-CECS	3.2	5	TB90-57-S3-CECS	3	5	TB90-57-S3-CECS	3
Entry 15-19 metres	2	CHAM-C / BL12	4	1	CHAM-C / BL12	3	1	CHAM-C / BL12	3.8	1	CHAM-C / BL12	3.8
Exit 0-19 metres										5	CHAM-C / BL12	3.8

Notes

- 1. This design guide is for entry lane only
- 2. Exit lane doesn't require 800/160 lux transitioning during day/night
- 3. Design assumes first 19 metres do not divulge into multiple routes of entry
- 4. If entering traffic can diverge in more than one direction in the first 19 metres, extend the same spacings in all directions of entry
- 5. Wider or more than two entrance lanes will require site specific design
- 6. Luminaire Type: **1xCECS** per entrance
 - Entry 0-15m: **Tauro Black (RF enabled with auto-dimming)**
 - Entry 15-19m & Exit Lane: **Chamaeleon III or Vico Batten (Permanently ON)**
- 7. All distances are measured from centre of lights
- 8. Emergency lighting is not covered here

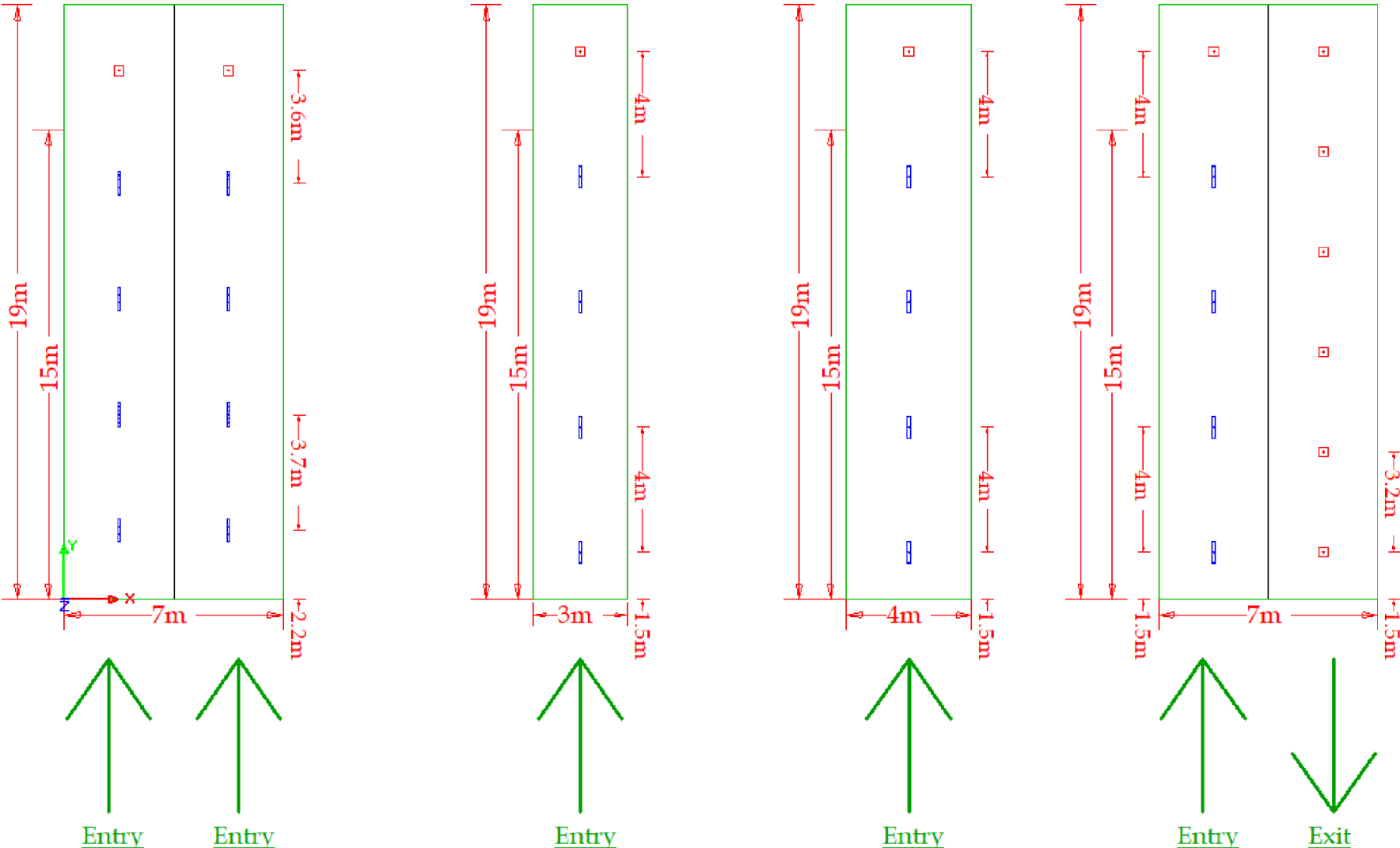


Ceiling / Mounting
Heights: 3.5m to 3.9m

Carpark Entry Spacing Tables for Unpainted Ceiling Types to achieve 800/160 lux during day/night for the first 19 metres as per AS 1680												
Type of Entrance / Ceiling Height	Case 1: 7m Wide Double Entry Lane			Case 2: 3m Wide Single Entry Lane			Case 3: 4m Wide Single Entry Lane			Case 4: 7m Wide Single Entry – Exit Lane		
3.5 – 3.9m High	Qty	Type	Spacing	Qty	Type	Spacing	Qty	Type	Spacing	Qty	Type	Spacing
Entry 0-15 metres	8	TB90-57-S3-CECS	3.7	4	TB90-57-AR1-CECS	4	4	TB90-57-AR1-CECS	4	4	TB90-57-AR1-CECS	4
Entry 15-19 metres	2	CHAM-C / BL12	3.6	1	CHAM-C / BL12	4	1	CHAM-C / BL12	4	1	CHAM-C / BL12	4
Exit 0-19 metres										6	CHAM-C / BL12	3.2

Notes

- 1. This design guide is for entry lane only
- 2. Exit lane doesn't require 800/160 lux transitioning during day/night
- 3. Design assumes first 19 metres do not divulge into multiple routes of entry
- 4. If entering traffic can diverge in more than one direction in the first 19 metres, extend the same spacings in all directions of entry
- 5. Wider or more than two entrance lanes will require site specific design
- 6. Luminaire Type: **1xCECS** per entrance
 - Entry 0-15m: **Tauro Black (RF enabled with auto-dimming)**
 - Entry 15-19m & Exit Lane: **Chamaeleon III or Vico Batten (Permanently ON)**
- 7. All distances are measured from centre of lights
- 8. Emergency lighting is not covered here

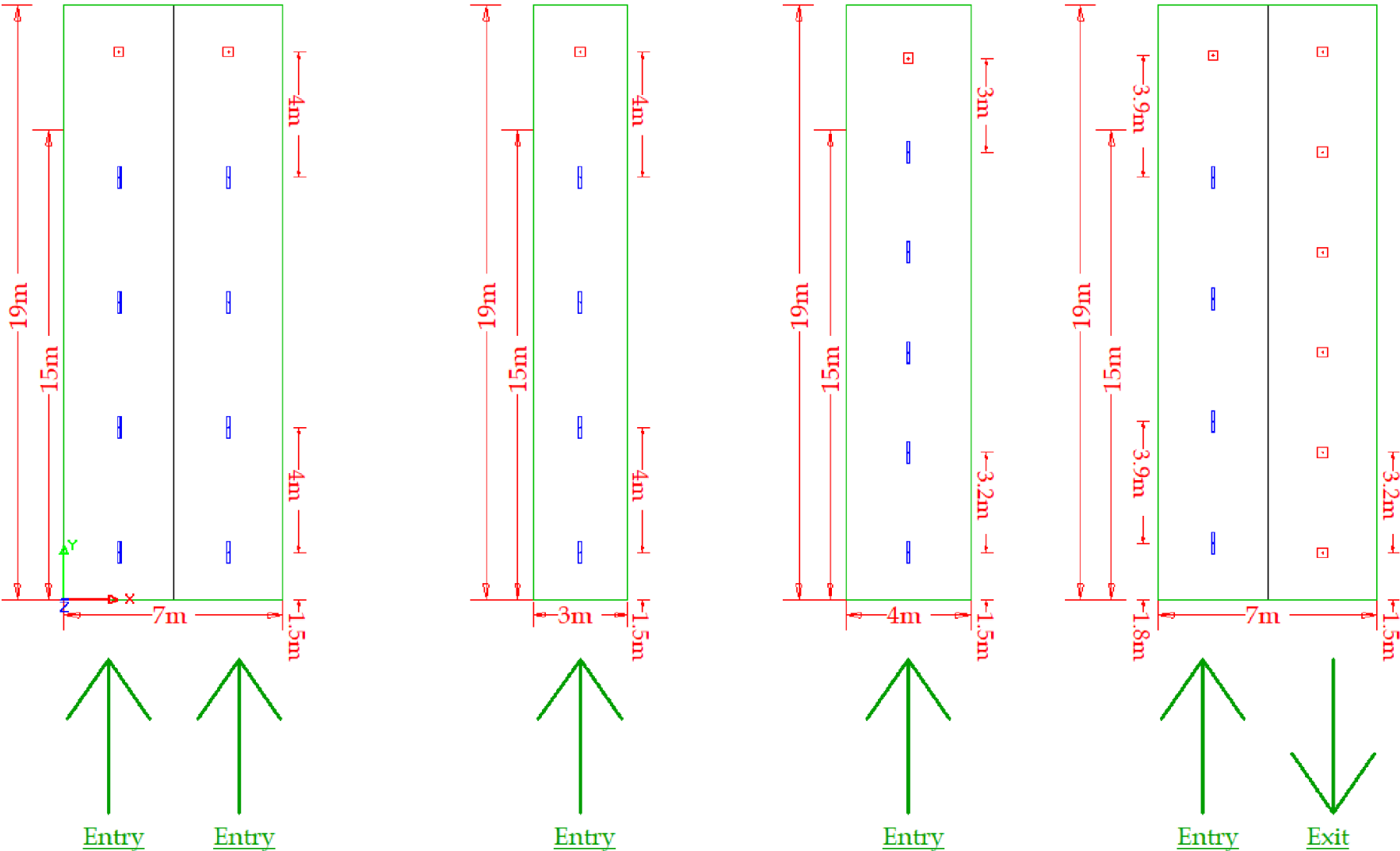


Ceiling / Mounting
Heights: 4.0m to 4.5m

Carpark Entry Spacing Tables for Unpainted Ceiling Types to achieve 800/160 lux during day/night for the first 19 metres as per AS 1680												
Type of Entrance / Ceiling Height	Case 1: 7m Wide Double Entry Lane			Case 2: 3m Wide Single Entry Lane			Case 3: 4m Wide Single Entry Lane			Case 4: 7m Wide Single Entry – Exit Lane		
4.0 – 4.5m High	Qty	Type	Spacing	Qty	Type	Spacing	Qty	Type	Spacing	Qty	Type	Spacing
Entry 0-15 metres	8	TB90-57-AR1-CECS	4	4	TB90-57-AR1-CECS	4	5	TB90-57-AR1-CECS	3.2	4	TB90-57-AR1-CECS	3.9
Entry 15-19 metres	2	CHAM-C / BL12	4	1	CHAM-C / BL12	4	1	CHAM-C / BL12	3	1	CHAM-C / BL12	3.9
Exit 0-19 metres										6	CHAM-C / BL12	3.2

Notes

- 1. This design guide is for entry lane only
- 2. Exit lane doesn't require 800/160 lux transitioning during day/night
- 3. Design assumes first 19 metres do not divulge into multiple routes of entry
- 4. If entering traffic can diverge in more than one direction in the first 19 metres, extend the same spacings in all directions of entry
- 5. Wider or more than two entrance lanes will require site specific design
- 6. Luminaire Type: **1xCECS** per entrance
 - Entry 0-15m: **Tauro Black (RF enabled with auto-dimming)**
 - Entry 15-19m & Exit Lane: **Chamaeleon III or Vico Batten (Permanently ON)**
- 7. All distances are measured from centre of lights
- 8. Emergency lighting is not covered here

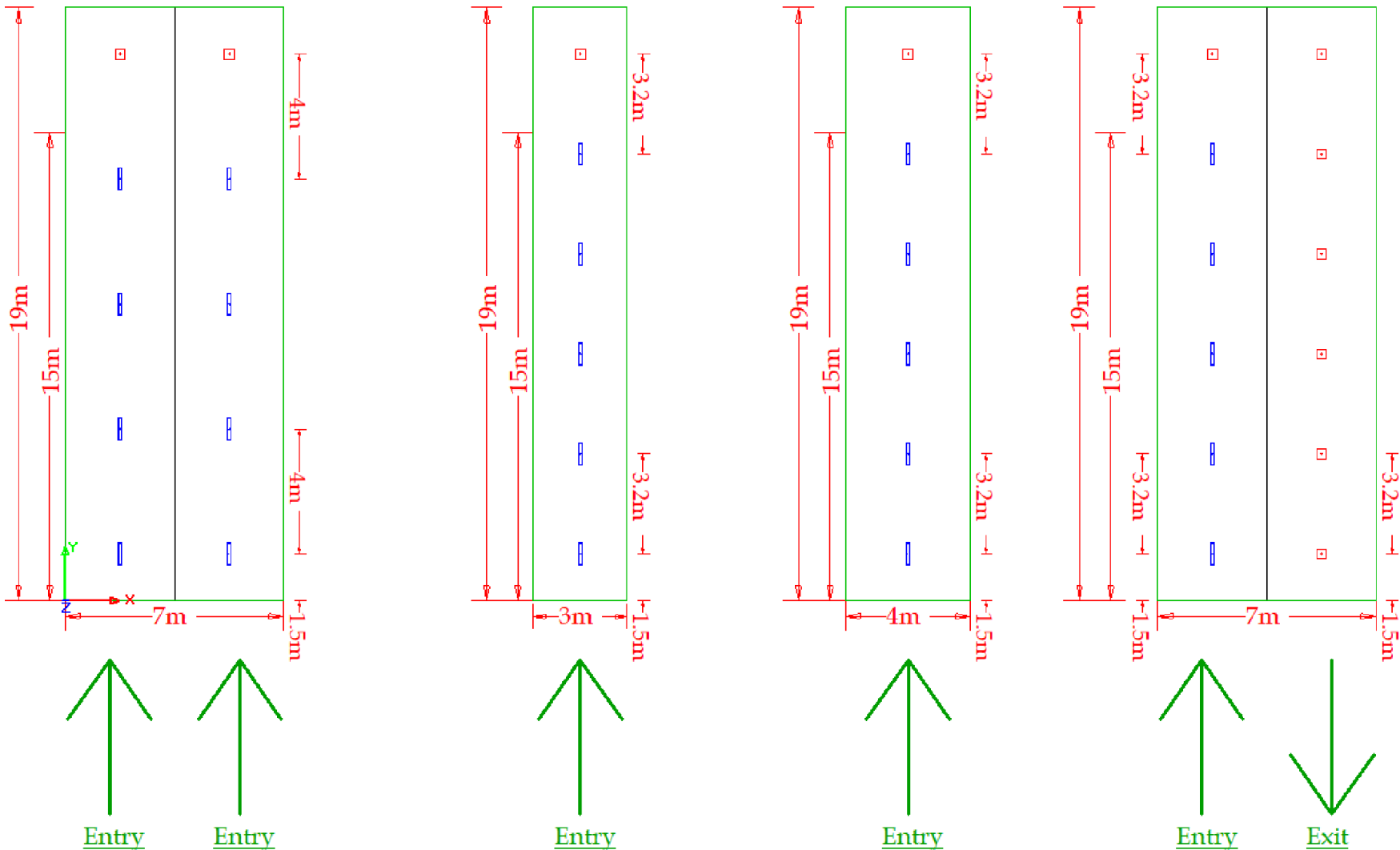


Ceiling / Mounting
Heights: 4.6m to 4.9m

Carpark Entry Spacing Tables for Unpainted Ceiling Types to achieve 800/160 lux during day/night for the first 19 metres as per AS 1680												
Type of Entrance / Ceiling Height	Case 1: 7m Wide Double Entry Lane			Case 2: 3m Wide Single Entry Lane			Case 3: 4m Wide Single Entry Lane			Case 4: 7m Wide Single Entry – Exit Lane		
4.6 – 4.9m High	Qty	Type	Spacing	Qty	Type	Spacing	Qty	Type	Spacing	Qty	Type	Spacing
Entry 0-15 metres	8	TB90-57-AR1-CECS	4	5	TB90-57-AR1-CECS	3.2	5	TB90-57-AR1-CECS	3.2	5	TB90-57-AR1-CECS	3.2
Entry 15-19 metres	2	CHAM-C / BL12	4	1	CHAM-C / BL12	3.2	1	CHAM-C / BL12	3.2	1	CHAM-C / BL12	3.2
Exit 0-19 metres										6	CHAM-C / BL12	3.2

Notes

- 1. This design guide is for entry lane only
- 2. Exit lane doesn't require 800/160 lux transitioning during day/night
- 3. Design assumes first 19 metres do not divulge into multiple routes of entry
- 4. If entering traffic can diverge in more than one direction in the first 19 metres, extend the same spacings in all directions of entry
- 5. Wider or more than two entrance lanes will require site specific design
- 6. Luminaire Type: **1xCECS** per entrance
 - Entry 0-15m: **Tauro Black (RF enabled with auto-dimming)**
 - Entry 15-19m & Exit Lane: **Chamaeleon III or Vico Batten (Permanently ON)**
- 7. All distances are measured from centre of lights
- 8. Emergency lighting is not covered here



Ceiling / Mounting
Heights: 5.0m to 5.8m

Carpark Entry Spacing Tables for Unpainted Ceiling Types to achieve 800/160 lux during day/night for the first 19 metres as per AS 1680												
Type of Entrance / Ceiling Height	Case 1: 7m Wide Double Entry Lane			Case 2: 3m Wide Single Entry Lane			Case 3: 4m Wide Single Entry Lane			Case 4: 7m Wide Single Entry – Exit Lane		
5.0 – 5.8m High	Qty	Type	Spacing	Qty	Type	Spacing	Qty	Type	Spacing	Qty	Type	Spacing
Entry 0-15 metres	8	TB90-57-AR1-CECS	3.75	5	TB90-57-AR1-CECS	3.2	4	TB120-57-AR1-CECS	4	5	TB90-57-AR1-CECS	3
Entry 15-19 metres	4	CHAM-C / BL12	2	2	CHAM-C / BL12	2	2	CHAM-C / BL12	2	2	CHAM-C / BL12	2
Exit 0-19 metres										6	CHAM-C / BL12	3.2

Notes

- 1. This design guide is for entry lane only
- 2. Exit lane doesn't require 800/160 lux transitioning during day/night
- 3. Design assumes first 19 metres do not divulge into multiple routes of entry
- 4. If entering traffic can diverge in more than one direction in the first 19 metres, extend the same spacings in all directions of entry
- 5. Wider or more than two entrance lanes will require site specific design
- 6. Luminaire Type: **1xCECS** per entrance
 - Entry 0-15m: **Tauro Black (RF enabled with auto-dimming)**
 - Entry 15-19m & Exit Lane: **Chamaeleon III or Vico Batten (Permanently ON)**
- 7. All distances are measured from centre of lights
- 8. Emergency lighting is not covered here

