



**enLighten** | Innovation in Lighting Solutions

Chamaeleon III



Chamaeleon  
Deco



## Case Study: Riviera Apartments, Chiswick

Undercover car park, fire stair, garbage room & internal corridor lighting upgrade

### Project Overview

Originally developed by Meriton in 2005, the Owner's Corporation of a Sydney harbourside residential apartment complex comprising 17 buildings upgrades lighting to save on electricity costs and stem maintenance cost spikes of its aging emergency lighting in common areas.

Site electricians A1 Sparky led by Alessandro Mattiolo and Building Manager David Ranieri conducted a thorough market assessment of LED lighting products over 4 years before the Owners Corporation approved the common area lighting upgrades of the Riviera Apartments with

enLighten's new Chamaeleon III and decorative arctic white oyster light.

The cost of maintaining the existing T8 fluorescent batten lighting was spiking at \$20K per year, due to the age of the light fittings and the labour intensity of fault finding to isolate failed individual lights on the lighting circuit. Approximately 10% of all emergency fittings were failing each 6 monthly battery discharge test.

*"We went with the Chamaeleon light over lower cost options due to the maintenance features, Our ability to carry spares and have an on-site handyman replace the light fittings or emergency battery without having to disconnect the power was a great tick for us & a future proofing of the lighting system."*

*We researched the company & had confidence in their Australian presence as the manufacturer, that they would be around to service / support our investment in the long term."*

**David Ranieri**  
On-Site Manager

## FAST FACTS

**Project Payback:**

**ROI: 2.8 years**

**Savings:**

Energy Saved:

**85%**

**Electricity Saved:**

**479,480 kWh pa**


**Total Energy & Maintenance Savings over 10 years:**

**\$1,558,969**

**Average Per Fitting Energy & Maintenance Savings over 10 years:**

**\$106 pa**

**[www.enlighten.com.au](http://www.enlighten.com.au)**

 **1800 365 444**

## The Solution

In internal corridors and lift lobbies, the new Chamaeleon decorative oyster with integrated microwave motion sensor replaced circular fluorescent and twin bayonet CFL fittings, which were 60W.



Chamaeleon Deco arctic white - full light output



Chamaeleon Deco arctic white - standby

Chamaeleon III

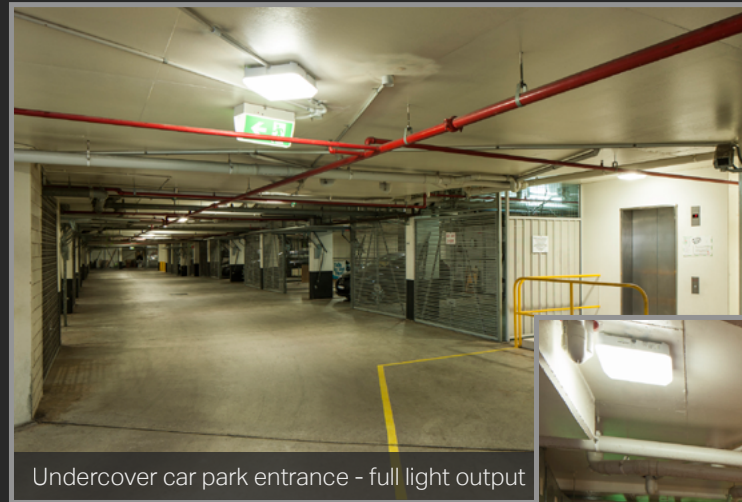


Chamaeleon Deco

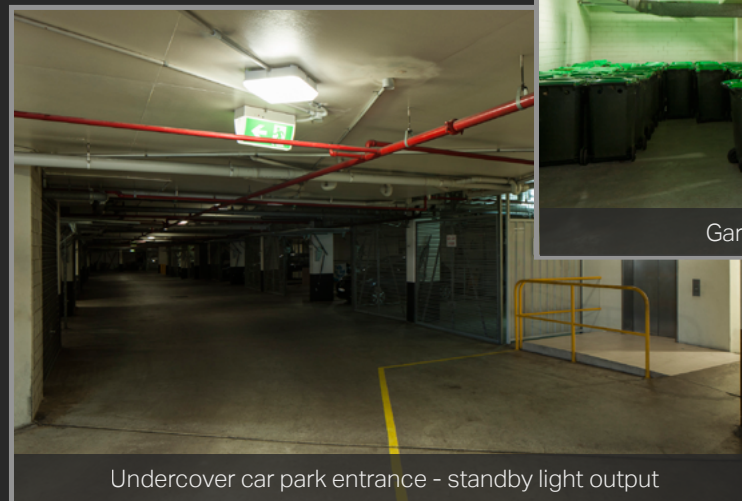


In the undercover car parks, garbage rooms and fire stairs, the new Chamaeleon III fitting was installed to replace single and twin T8 fluorescent battens.

The feedback from the residents has been very positive.



Undercover car park entrance - full light output



Undercover car park entrance - standby light output



Garbage room lighting -Chamaeleon III

## About enLighten

Our passion is delivering energy savings through intelligent LED lighting solutions.

We are a privately owned Australian innovation company. The enLighten product range is designed by us and manufactured exclusively for us.

## Chamaeleon III wins IES Award of Excellence



[www.enlighten.com.au](http://www.enlighten.com.au)

1800 365 444

