



enLighten

Area/flood luminaire

UP TO
76%
ENERGY SAVINGS
70-1000W HID replacement

High Efficacy
139 lm/W

Noctua

Directional flood light with superior illumination

The Noctua is a high quality commercial LED floodlight that has been designed to maximise area illumination and light uniformity.

Designed with an asymmetrical forward throwing lens, the Noctua provides 30% better illumination than competitors. The lensed optics are engineered to achieve significant glare reduction giving you light where you need it.

A robust and reliable product engineered with high ingress protection to endure the harsh Australian environment.

Ideal for outdoor carparks, building perimeters, industrial estates, loading docks, and working yards.



(IPART Approved for standard models only,
DALI/Dimmable versions are not registered with IPART)

OPTIONS AND BENEFITS

- **Easy installation** using an offset angle bracket
- **Low glare LED floodlight** with a forward throwing lens
- **High luminaire efficacy** - Up to 139 lm/W
- **High performance Nichia LEDs** with over 130,000 hours of operating life @L70
- **Power factor improvements** when replacing traditional HID lighting
- **Wide range available** from 20W up to 240W
- **Corrosion resistant** powder coated body
- **Control Options** - 1-10V, DALI
- **IP66** - Ingress protection for dust and withstands significant water pressure
- **IK08** - Impact resistance
- **Highly reliable driver** with in-built 12kV surge protection device
- **Respirator valve** achieves zero steam build up internally

APPLICATIONS



BUILDING PERIMETERS



INDUSTRIAL ESTATES



LOADING DOCK



OUTDOOR CARPARKS



WORKING YARDS

FEATURES



DIRECTIONAL LIGHT THROW



EASY INSTALL



IMPACT RATING



INGRESS PROTECTION



SAFETY COMPLIANCE



YEAR WARRANTY

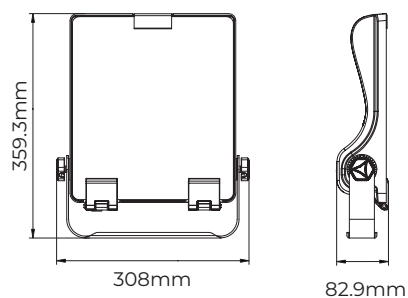
PRODUCT RANGE

Model #	Rated Power (W)	Lumen Output (lm)	Dimensions (mm)	Weight (kg)
NFL20-40K-FTL	20	3000	308 x 82.9 x 359.3	4.3
NFL40-40K-FTL	40	5,740	308 x 82.9 x 359.3	4.3
NFL60-40K-FTL	60	8,440	308 x 82.9 x 359.3	4.5
NFL80-40K-FTL	80	10,790	308 x 82.9 x 359.3	4.6
NFL100-40K-FTL	100	13,970	366 x 82.9 x 413.2	6.3
NFL120-40K-FTL	120	16,240	366 x 82.9 x 413.2	6.5
NFL150-40K-FTL	150	20,240	366 x 82.9 x 413.2	6.8
NFL180-40K-FTL	180	24,390	462 x 87.9 x 452.3	8.4
NFL200-40K-FTL	200	26,430	462 x 87.9 x 452.3	8.6
NFL240-40K-FTL	240	31,670	462 x 87.9 x 452.3	8.9

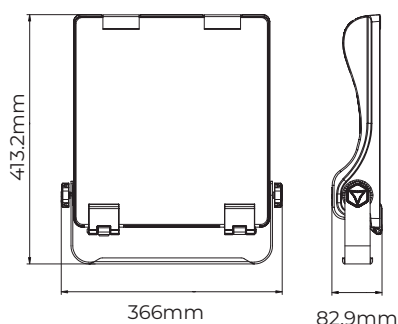
The Noctua LED floodlight comes in 4000K non-dimming version as standard. 3000K & 5000K Correlated Colour Temperatures (CCT) available. 1-10V, PWM and DALI dimmable floodlights available on order.

DIMENSIONS

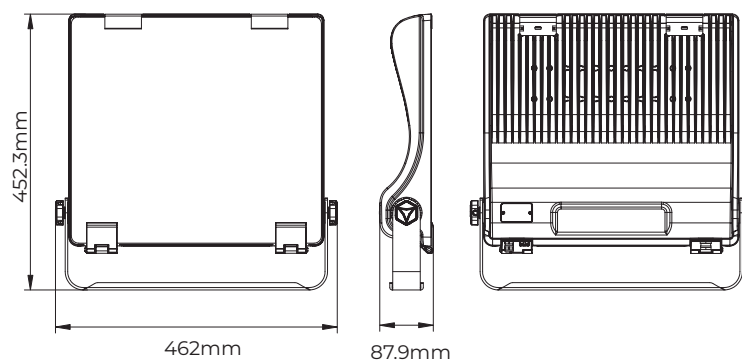
20W, 40W, 60W, 80W



100W, 120W, 150W



180W, 200W, 240W



TECHNICAL INFORMATION

Optical

Light source	Nichia LEDs
Lumen output	5,740 - 31,670 lumens
CRI	Ra>70, Ra>80
CCT	4000K standard; 3000K & 5000K optional
Luminaire efficacy	Up to 139 lm/W
Beam angle	Asymmetric forward throw

Electrical

Power consumption	40W - 240W
Operating frequency	50Hz
Operating voltage range	220 - 240V AC
Power factor	>0.90/240V AC
Driver	Sosen, DALI compliant driver (optional)
Dimming controls (optional)	

Environmental

IP rating	IP66
IK rating	IK08
Net weight	4.3kg - 8.9kg
Ambient temperature range	-30°C to 50°C
Material composition (body)	Aluminium alloy
Material composition (diffuser)	Polycarbonate lens and tempered glass
Expected lifespan	130,000 hours @ L70 100,000 hours @ L80 46,000 hours @ L90

Controls - Optional	1-10V, DALI
----------------------------	-------------

Warranty*	5 years
------------------	---------

Data subject to change without notice
* Refer to warranty policy

MOUNTING

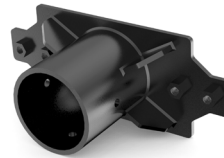
The Noctua achieves optimum illumination when tilted upwards between 0° to 20° above the horizontal position when mounted on a wall or pole.

The forward throwing lens minimises backward light spill, reducing glare and night sky pollution.

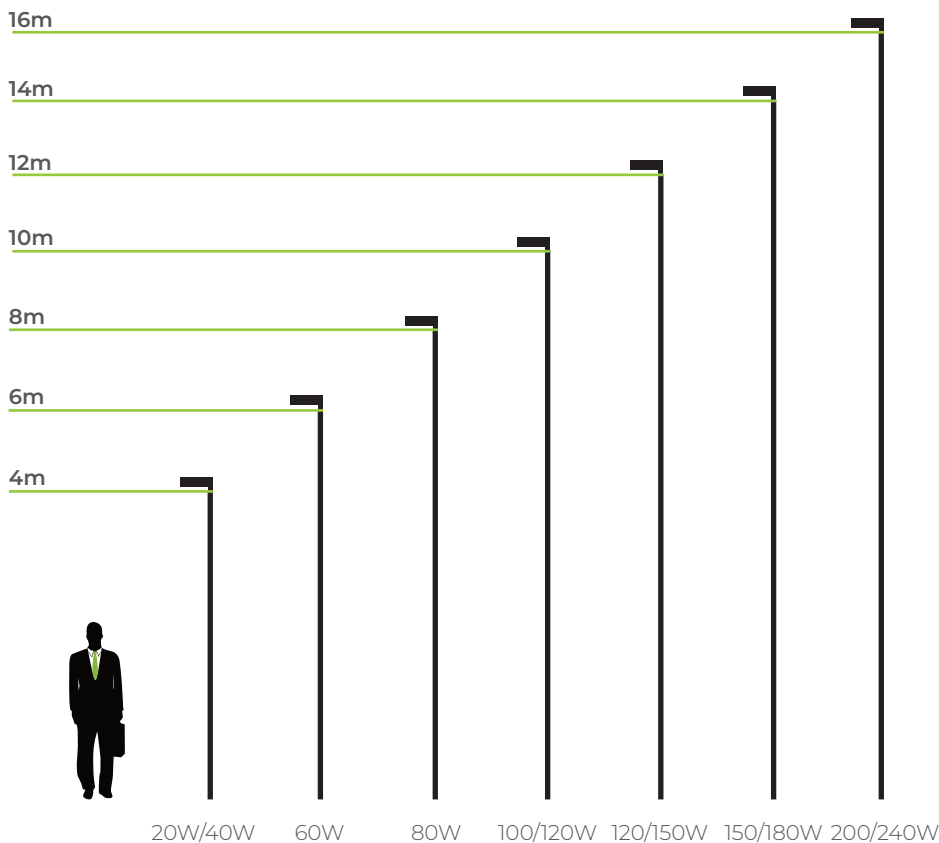


POLE MOUNT ADAPTORS

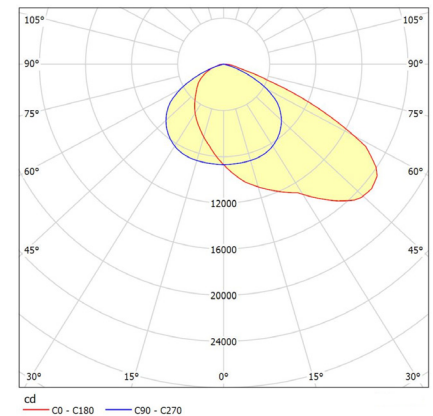
enLighten offers three sizes of powder coated pole mounted adaptors: 42mm, 60mm, 76mm.



INDICATIVE POLE & WALL MOUNTING GUIDE*



PHOTOMETRICS



*The Noctua can be pole or directly wall mounted at the above heights to achieve optimal area lighting

COMPLIANCE

The Noctua LED Floodlight meets or exceeds all relevant standards and regulatory requirements.



For a full compliance and testing list visit www.enlighten.com.au. IES files, warranty, installation and product guides are also available for download.

Sold nationally through major electrical wholesalers.

BENEFITS OF THE NOCTUA FORWARD THROWING LENS

Both lights below are angled to achieve optimum illumination of the ground.

Noctua

enLighten's Noctua LED flood light with forward throwing lens
Tilted upwards by 20°

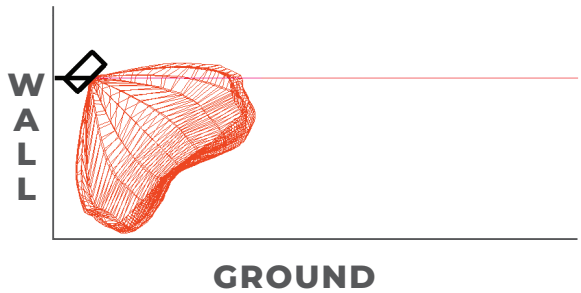


The diagram shows a green beam spread from a light fixture mounted on a wall. The beam is directed downwards at a 20-degree angle, creating a focused, oval-shaped area of illumination on the ground. The wall is labeled 'WALL' and the ground is labeled 'GROUND'.

1. Negligible spillage of light into nearby buildings and properties.
2. Provides up to 30% better illumination uniformity and saves up to 40W when compared against common LED floodlights.

Competitor

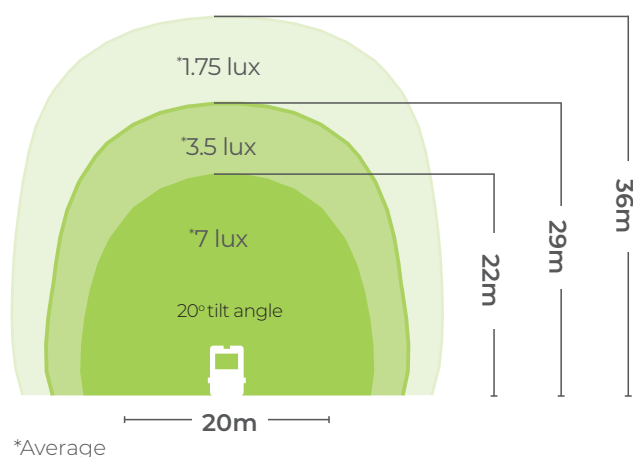
Standard LED flood light
Tilted upwards by 45°



The diagram shows a red beam spread from a light fixture mounted on a wall. The beam is directed upwards at a 45-degree angle, creating a wider, more irregular area of illumination on the ground. The wall is labeled 'WALL' and the ground is labeled 'GROUND'.

1. 3x greater glare.
2. Up to 10% night sky light pollution and spillage of light into nearby building and properties.

Example: Noctua 60W, 8m mount height



Application	Average lux requirements as per AS1158
General common areas, forecourts of cluster housing	1.75 lux
Exterior carpark	3.5 lux
Outdoor shopping precincts, civic centres, transport terminals	7 lux