

Chamaeleon III IP65



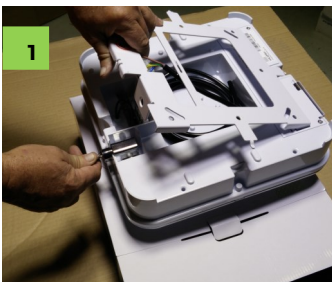
Installation Instructions



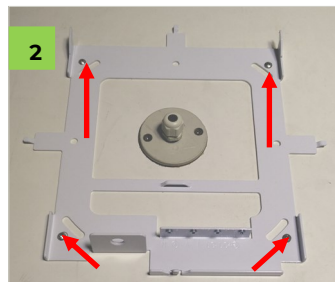
NOTE: All electrical work must be carried out by a licensed electrician as per the latest AS 3000 wiring regulations. Light must be operated within its specified operating parameters and in accordance with our warranty requirements. These documents are available on our website.

Emergency lights must be connected to permanent electrical supply to avoid premature battery failure.

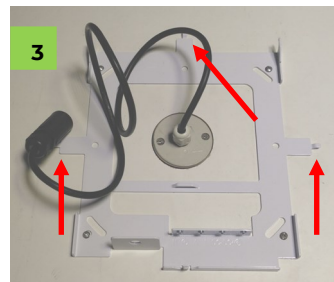
Installation



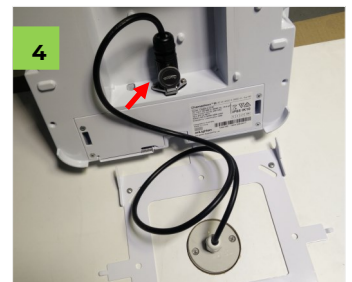
1 Place the light on a soft surface to avoid scratching the diffuser. Using the key taped to the body of the light, remove the base by turning the key and pulling on the barrel lock.



2 Mount Smart-Connect base by fixing it to the ceiling at all four corners. Minimum size fixing: 6.5mm. If fixing to plasterboard use 4 hollow wall anchors.



3 Connect the IP65 cables to a suitable waterproof junction box.. The conduit locator tabs help hold conduit in the right position. Standard conduit size 20mm, a reducer is required for 25mm conduit.



4 Connect the IP65 plug to the connector on the back of the Chamaeleon III fitting. Twist the plug to lock.



5 Place Smart-Connect Base plate hinge tabs into slots located at opposite end to barrel lock.

Once aligned, press the light upwards. Push barrel lock in to secure.



6 A vandal proof skirt is available as an optional extra (part no. **Cham-VPS**). To install the vandal proof skirt, slide it over the light before connecting the light to the Smart-Connect Base as shown in the previous step.

For emergency lights it is important to stick the emergency symbol on the outside of the vandal proof skirt.

Once installed, the Chamaeleon III can be easily detached from the Smart-Connect base without disconnecting the power, making it easy for maintenance or light replacement.



NOTE: The IP65 plug remains live and should not be left unattended without a Chamaeleon III light connected.

Chamaeleon III App

After installation, use the Chamaeleon III app to change timer settings, full & standby levels or to disable the motion sensor.

To find out more about the Chamaeleon III app and to download, scan the QR code on the right or follow the link below.

www.enlighten.com.au/smart-controls/chamaeleon-3-app



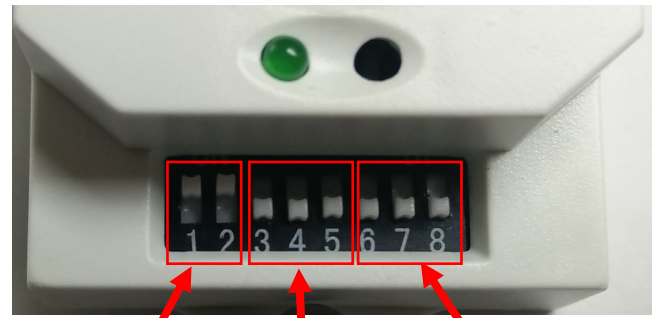
Microwave Sensor Settings

If you wish to adjust microwave sensor, remove the diffuser with an Allen key and adjust settings to suit. After adjustment, ensure diffuser is secured properly to maintain the IP65 seal. Do not overtighten screws.

Microwave sensor Detection Range

The detection range/sensitivity of the sensor may be adjusted if required. Default setting is **10m**.

Sensor Range		
Dipswitch ->	1	2
2m	OFF	OFF
5m	OFF	ON
8m	ON	OFF
10m	ON	ON



Detection range (S1, S2)

Time (S3, S4, S5)

PE cell (S6, S7, S8)

Hold Time

Time the fitting stays at full light, before dimming down to the standby light level.

If the Chamaeleon III App is used to adjust the timer setting, it is important that dipswitches 3,4&5 are left in the OFF position (10s). Factory setting: **10s**

Hold Time (Leave at 10s, use Chamaeleon III app to adjust time)								
Dipswitch ->	S3	S4	S5	Dipswitch ->	S3	S4	S5	
10s	OFF	OFF	OFF	50s	ON	OFF	OFF	
20s	OFF	OFF	ON	1min	ON	OFF	ON	
30s	OFF	ON	OFF	2min	ON	ON	OFF	
40s	OFF	ON	ON	5min	ON	ON	ON	

Daylight sensor

When the daylight sensor is enabled, the fitting will stay at standby light level when there is sufficient natural light in the area. The fitting will not react to movement during this time. When light levels drop, the motion sensor becomes active and the fitting will switch to full brightness when motion is detected. A value of 50lux is suitable for most applications. **Please note that the fitting will not switch off completely during the day.**

If this function is not desired, leave dipswitches 6, 7&8 in the OFF position. Factory setting: **24h/OFF**

PE Cell/Daylight Sensor								
Dipswitch ->	S6	S7	S8	Dipswitch ->	S6	S7	S8	
24h/OFF	OFF	OFF	OFF	100 lux	ON	OFF	OFF	
10 lux	OFF	OFF	ON	200 lux	ON	OFF	ON	
20 lux	OFF	ON	OFF	300 lux	ON	ON	OFF	
50 lux	OFF	ON	ON	500 lux	ON	ON	ON	

Battery Status on Installation

For emergency versions, the status LED indicates battery status and is visible through the diffuser. On light start-up the indicator is light blue and then, after 60 seconds, red or green shows the condition of the battery.



- Light blue—warming up light
- Solid Green or Red –OK
- Flashing Green & Red– battery not connected/faulty
- No light– fitting is faulty

Battery Self-Test Function

The Chamaeleon III emergency light is programmed to automatically conduct a monthly self-test. The test does not disrupt the light's normal operation.

There are 2 types of self-test:

- Monthly 90min test
- Commissioning test of 120min after the light has been installed or whenever the battery is replaced. Battery is charged for 24hrs before the test commences.

Indicator Colour	Light Operation
Solid blue /violet	Testing in progress (90 mins)
Flashing blue / violet	Recently tested and complies* Normal state awaiting next discharge test
Flashing yellow	Tested and failed due to faulty LED's
Flashing red	Tested and failed due to battery

* Following a successful discharge test, the blue flashing light indicator will be mixed with a solid green or red light to show battery charge status (red - charging, green—charged)

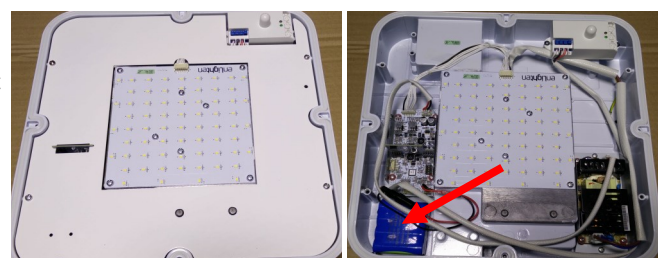
After each test the results are displayed via a single multi colour LED indicator located under the diffuser, see table above. The test result will be displayed until another self-test has taken place or until the battery has been replaced.

During normal operation the expected indicator colours would be a sequence of 5 blue flashes (to indicate self-test has passed) and either 1 red flash (battery charging) or 1 green flash (battery charged).

Battery Replacement

To replace the battery, remove diffuser and white cover plate. Disconnect the red in-line connector and connect the new battery. Secure battery with double sided tape. Reassemble fitting. Ensure diffuser seals well to maintain IP65 rating. Do not overtighten diffuser screws.

Part no. for the replacement battery is **SPC-Batt-HCi**



July 2021 E&OE