

# Noctua flood light



## Installation Instructions

NOTE: All electrical work must be carried out by a licensed electrician as per the latest AS 3000 wiring regulations.

WARNING: All maintenance is to be performed by qualified personnel only. De-energize all supplies before maintenance.

This luminaire contains non-user replaceable lamps.

The light must be operated within its specified operating parameters and in accordance with our warranty requirements. These documents are available on our website.

The light is supplied with a 1.5m cable which must be terminated in a waterproof junction box. For retrofit solutions, ensure the existing pole is suitable to mount the fitting.

This fitting should be installed with an upward tilt between 0° and 20° when illuminating an area. Tilt angles >20° will result in light wastage and glare.

If the external flexible cable or cord of the luminaire is damaged, it should only be replaced by the supplier, a service agent or qualified person.

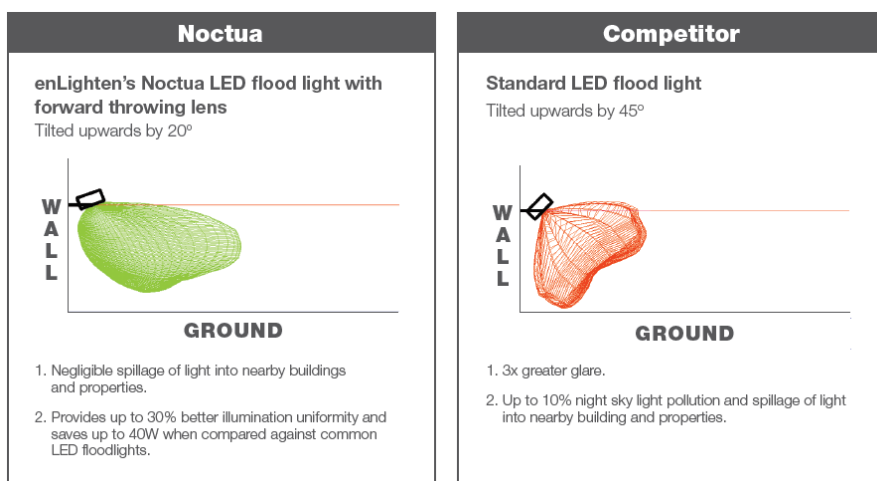


## Benefits of the Noctua's Forward Throwing Lens

The Noctua flood light is fitted with a unique forward throwing lens. The graphics below show the difference between the Noctua and a common LED flood light.

Both lights are angled to achieve optimum illumination of the ground. It can be seen that the Noctua can be tilted at an angle of between 0 and 20 degrees to achieve the desired lighting outcome whereas the normal LED flood light has to be tilted to 45 degrees.

The low tilt angle of the Noctua results in low glare, less light pollution and more light being delivered to where it's needed.



## Mounting

The Noctua offers the following mounting options which are shown in detail on the next page

- Wall mount (no adaptor required)
- Pole mount with pole top adaptor
- Pole mount with pole clamp adaptor

## Accessories

### Pole top adaptors

Three sizes of black powder coated pole top adaptors are available:

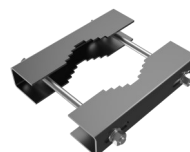
- **NFL-PM42** for 42mm OD round poles
- **NFL-PM60** for 60mm OD round poles or 50-55mm square poles
- **NFL-PM76** for 76mm OD round poles



### Pole clamp adaptor

Two sizes of black powder coated pole clamp adaptors are available for mounting one or two Noctua lights on a pole.

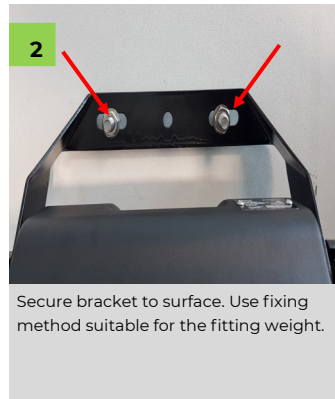
- **NFL-PC40-80** for Noctua 20W-80W, fits 40mm-100mm dia round pole
- **NFL-PC100-240** for Noctua 100W-240W, fits 40mm-150mm dia round pole



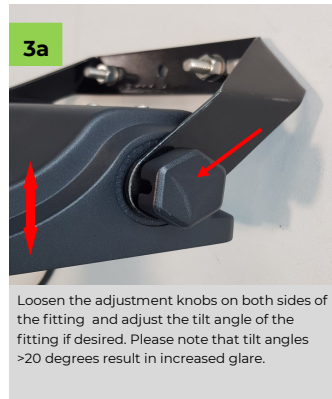
## Wall Mount



Drill mounting holes. M10 fixing size is recommended



Secure bracket to surface. Use fixing method suitable for the fitting weight.

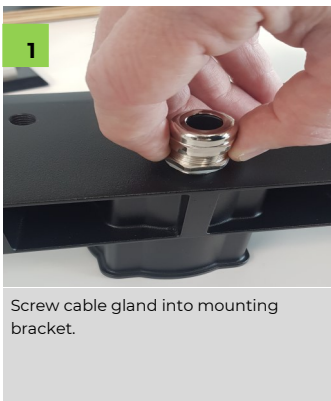


Loosen the adjustment knobs on both sides of the fitting and adjust the tilt angle of the fitting if desired. Please note that tilt angles >20 degrees result in increased glare.

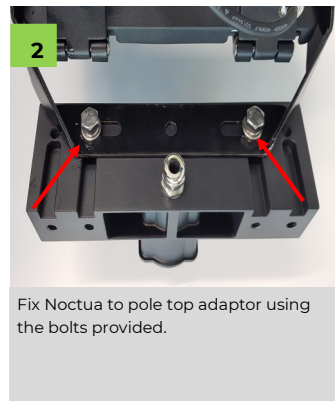


The markings on the fitting are in 10 degree intervals. After the tilt angle has been set, tighten the adjustment knobs. Connect the mains wires to a waterproof junction box.

## Pole mount with pole top adaptor



Screw cable gland into mounting bracket.



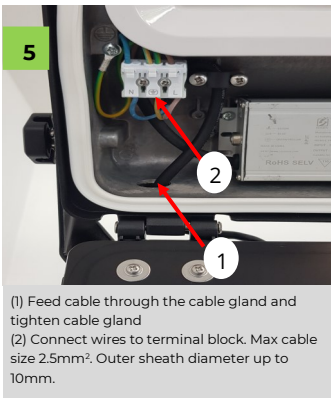
Fix Noctua to pole top adaptor using the bolts provided.



Slip adaptor over pole and tighten bolts to secure to pole.



Lift buckle to open housing. Take care not to leave fingerprints on the inside of the glass.



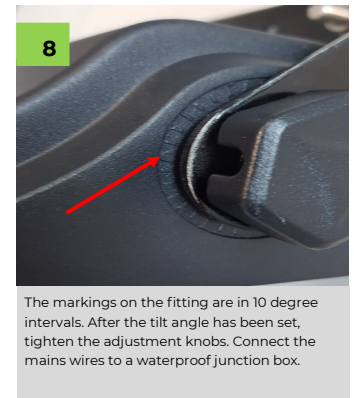
(1) Feed cable through the cable gland and tighten cable gland  
(2) Connect wires to terminal block. Max cable size 2.5mm<sup>2</sup>. Outer sheath diameter up to 10mm.



Close housing and clip buckle to secure.

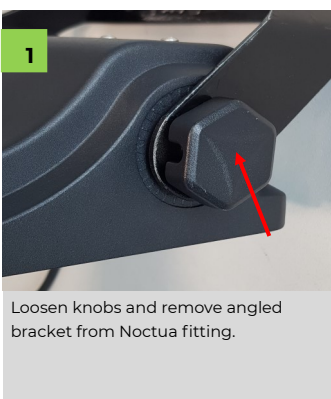


Loosen the adjustment knobs on both sides of the fitting and adjust the tilt angle of the fitting if desired. Please note that tilt angles >20 degrees result in increased glare.



The markings on the fitting are in 10 degree intervals. After the tilt angle has been set, tighten the adjustment knobs. Connect the mains wires to a waterproof junction box.

## Pole mount with pole clamp adaptor



Loosen knobs and remove angled bracket from Noctua fitting.



Clamp pole clamp adaptor and angled bracket to pole using the bolts and nuts provided.



Mount Noctua to angled bracket and tighten the knobs. Connect mains cable to power. Adjust tilt angle as shown above.

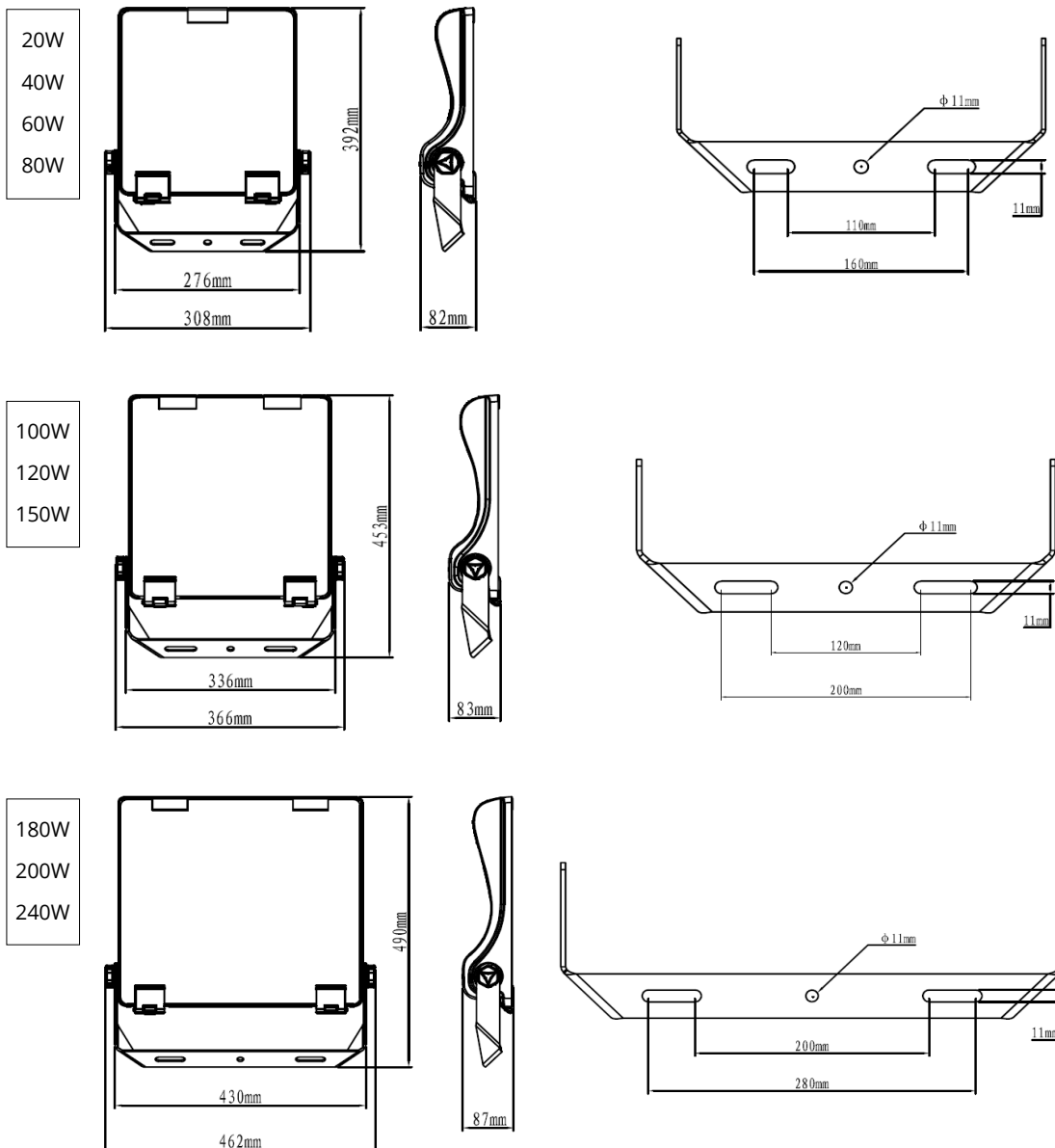


The pole clamp adaptor can fit one or two Noctua fittings.

## Key Luminaire Specifications

Model	Version	Power Rating	Ambient Temperature	Weight	IP rating	IK rating
NFL20	Noctua 20W	220-240V 50/60Hz, 20W	-30°C to +45°	4.3kg	IP66	IK08
NFL40	Noctua 40W	220-240V 50/60Hz, 40W	-30°C to +45°	4.3kg	IP66	IK08
NFL60	Noctua 60W	220-240V 50/60Hz, 60W	-30°C to +45°	4.5kg	IP66	IK08
NFL80	Noctua 80W	220-240V 50/60Hz, 80W	-30°C to +45°	4.6kg	IP66	IK08
NFL100	Noctua 100W	220-240V 50/60Hz, 100W	-30°C to +45°	6.3kg	IP66	IK08
NFL120	Noctua 120W	220-240V 50/60Hz, 120W	-30°C to +45°	6.5kg	IP66	IK08
NFL150	Noctua 150W	220-240V 50/60Hz, 150W	-30°C to +45°	6.8kg	IP66	IK08
NFL180	Noctua 180W	220-240V 50/60Hz, 180W	-30°C to +45°	8.4kg	IP66	IK08
NFL200	Noctua 200W	220-240V 50/60Hz, 200W	-30°C to +45°	8.6kg	IP66	IK08
NFL240	Noctua 240W	220-240V 50/60Hz, 240W	-30°C to +45°	8.9kg	IP66	IK08

## Dimensions



May 2022 E&OE