

# CIRCUIT

MAR  
2019

IN ASSOCIATION WITH  
 MASTER  
ELECTRICIANS  
AUSTRALIA



~~YOU CAN'T~~  
**MEASURE  
VOLTAGE  
WITHOUT  
TEST LEADS**

Fluke T6-1000 Electrical Tester

**FLUKE.**



## enLighten lights up 140 William Street, Melbourne

The first 'total energy concept' office building in Australia continues to get greener with age.

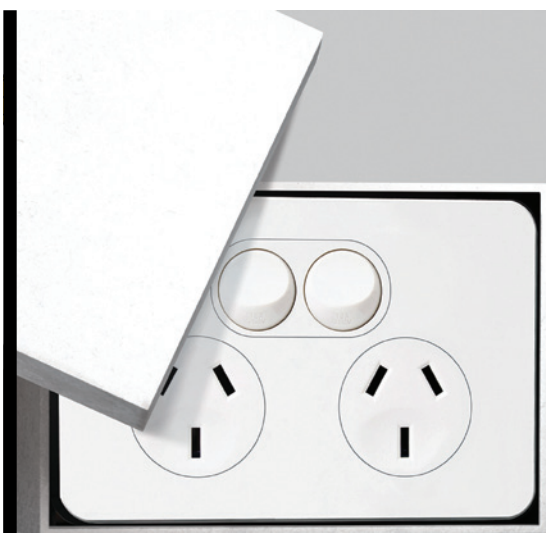
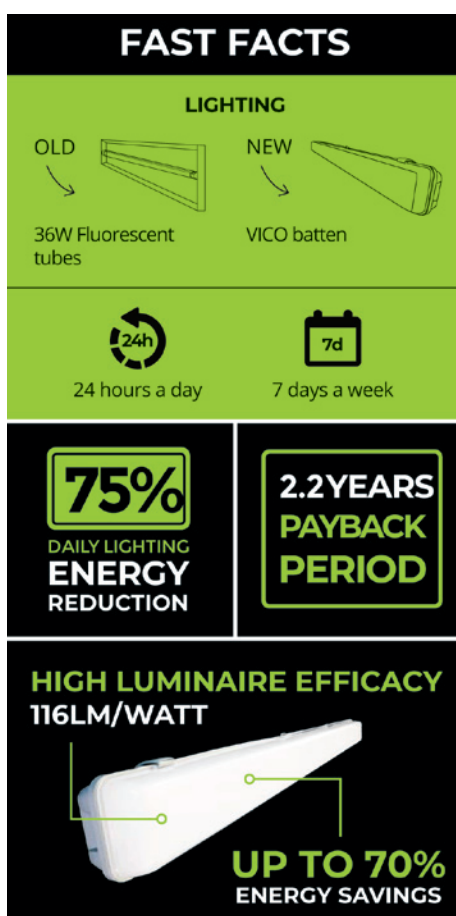
Jones Lang LaSalle recently engaged Harris HMC, commercial electricians specialising in sustainable lighting solutions, to further enhance the energy savings and maintenance costs for the iconic 140 William Street, Melbourne (formerly known as BHP House).

enLighten initially supplied the Chamaeleon Original luminaire for the 41 level 'A' grade building fire stairs and recently followed this with the installation of the standard and emergency Vico luminaire in the car park fire stairs. By simply changing from inefficient 36W fluorescent tubes to cost-effective LED batten tubes with integrated microwave sensors in the car park fire stairs, significant energy savings of 75 per cent were achieved, while improving the lighting output by 120 per cent.

On this project they have been able to forecast savings of 66,306kWh and 6,560kg in CO<sub>2</sub> over a 10-year period. The Vico LED batten offers a quality T8 or T5 fluorescent replacement and is an intelligent LED lighting solution for long-lit, low occupancy spaces.

Jones Lang LaSalle building services manager Darren Hynd said, "It is important that we always look at ways to improve the safety while keeping in mind improving sustainable energy efficient

practices when making improvements to our properties. enLighten's Vico batten has not only improved light output but it has dramatically reduced energy spend within the fire stairs. These real savings add up." ■



## Design, safety and quality

Over the past two decades, Hager's product offer has grown rapidly in Australia from humble beginnings specialising in protection and metering systems to a provider of entire electrical solutions for intelligent residential and commercial buildings.

Hager's Silhouette range has a simple but elegant form based on a serene balance of proportions and a reduction to the object essentials, giving the product the right tone of voice in order to fit within its environment. With the launch of Silhouette matte white, alongside its existing gloss white and matte black, the Silhouette range offers a clean, modern and harmonic design to complement any colour scheme.

Using innovative technology and clear-cut design, Hager has given energy a 'face'—one that's pleasant to look at and easy to understand.

With a depth of only 4mm off the wall surface, built-in child safety shutters in all sockets, UV-stabilised materials and a large range of accessories and mechanisms available, the Silhouette range meets the needs of those who value good design, safety and quality, which is the embodiment of Hager's character. ■



### LED track lights

Adaptable, versatile and flexible—it's no wonder that track lighting is a popular choice for both commercial and residential applications.

BoscoLighting's track light system includes surface mounted, suspended and recessed tracks, comes in different colour finishes and is available in a choice of single circuit, three circuit and DALI tracks.

A wide variety of track lights and related lighting accessories available to order through the major Wholesalers as well as many independents. They're dimmable, adjustable and with colour temperatures ranging from 2700-6500K. ■



  
**enLighten**  
Innovation in Lighting Solutions

**SELF-HEALING  
WIRELESS MESH  
COMMUNICATION  
NETWORK**

**MAKE YOUR CAR PARK ENTRANCE SYSTEM  
COMPLIANT TO AS1680**

Call us on 1800 365 444 | [enlighten.com.au](http://enlighten.com.au)